



Kwik-Clamp, Your Reliable Quick Change Workholding System

Reduce downtime &
increase productivity
with **ONE** set-up!



3-AXIS | **4-AXIS** | **5-AXIS**

800-824-8333 | raptorworkholding.com

INCREASE THROUGHPUT AND SLASH SETUP TIMES WITH THE KWIK-CLAMP FROM RAPTOR!

Raptor's Kwik-Clamp Workholding System reduces setup and changeover time through applied pneumatics, dowels and a single industry-standard retention knob, to instantly locate and lock various machining fixtures. Systems are available for 3-, 4- and 5-axis machining centers and indexers. The patent-pending Kwik-Clamp system provides clamping forces from 2,000-4,000 lbs. with 0.0002-inch repeatability.

Machines fitted with the Kwik-Clamp system allow users to exchange fixtures quickly, while clamping accurately. Pneumatic clamping actuation makes the Kwik-Clamp ideal for automation and robotic loading applications. The Kwik-Clamp System increases productivity and lowers costs by significantly shortening changeover times, allowing machine shops to maximize machining throughput and quality.



CONTACT US TODAY
to order your Kwik-Clamp
System and maximize your
throughput and profits!

Ideal for automation and robotic applications



3-Axis Kwik-Clamp Part Number: **RKC-301**
Air Plumbing: Side of unit

**All units are
repeatable within
.0002 inch.**



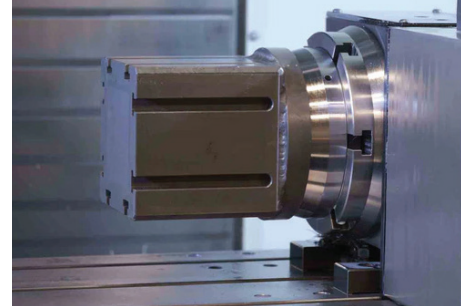
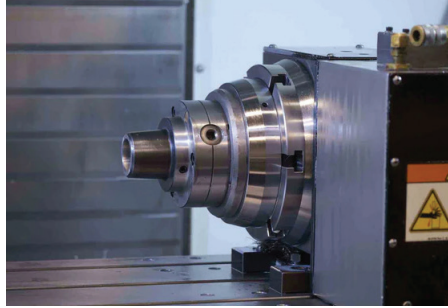
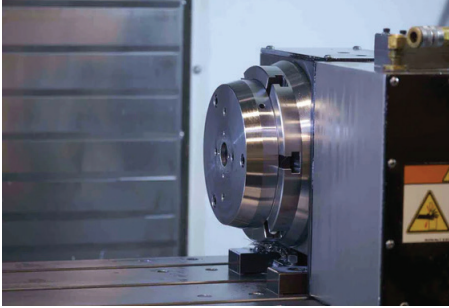
5-Axis Kwik-Clamp Part Number: **RKC-501**
Air Plumbing: Bottom of base for through-pallet air systems



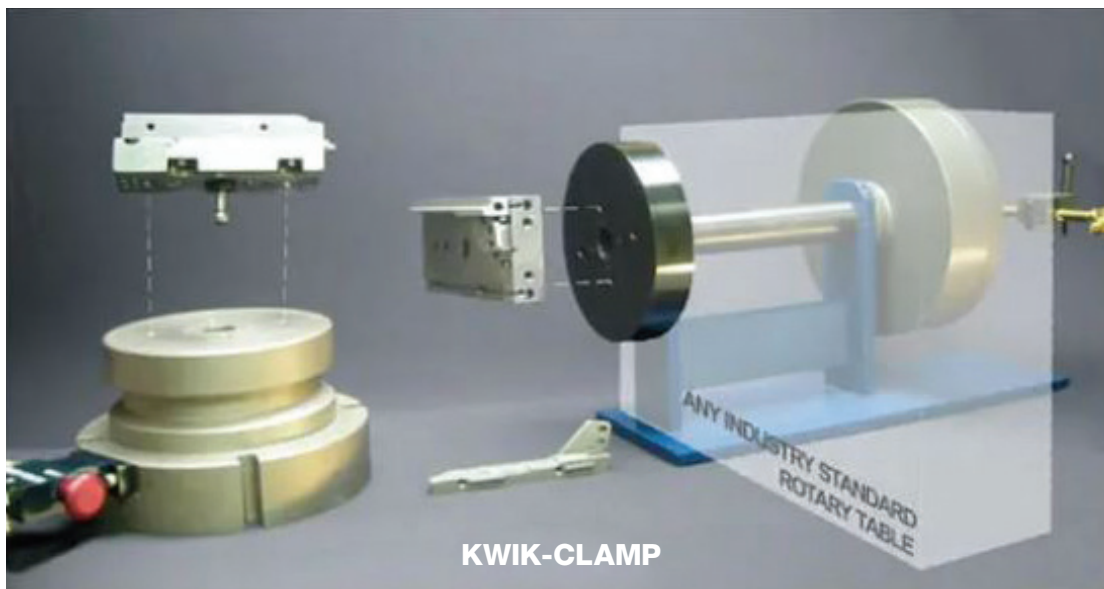
RKC-301 AND RKC-501 TECHNICAL SPECIFICATIONS

- Repeatable within .0002 inch
- Can be mounted using clamping rail or integrated bolt slots in workpieces
- Unit can be located using round and diamond pins on bottom surface
- 6.5 inch round surface with .313 inch I.D. bushings located 2.5 inch and 4.0 inch apart with a pull stud system through the middle
- Flatness of face .0005 inch, 5 inch from top to bottom, 7.5 inch footprint
- One continuous groove around the bottom O.D., mounting is easily accomplished with standard toe-clamps and screws
- Housing: 4140/4130 steel finished with electroless nickel
- Drawbar: 4330 (aircraft quality) ground and polished, heat treated to 30 rockwell and finished with chrome plating
- Valve housing: 6061 anodized aluminum
- Tubing for air: copper
- .313 inch bushings: D2 tool steel heat-treated to 60C Rockwell
- 6 inch, internal piston with 2,000 lbs. clamping force at 100 psi
- Connects directly to machine air with all required fittings included
- Check valve included to prevent unclamping in case of loss of air
- Automation can easily be added by mounting two tapered pins to the gripper and two tapered holes to the workholding

KWIK-CLAMP – 4-AXIS

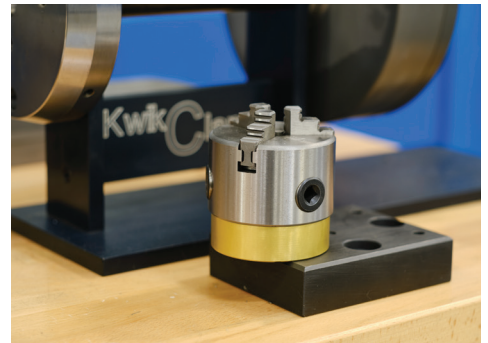
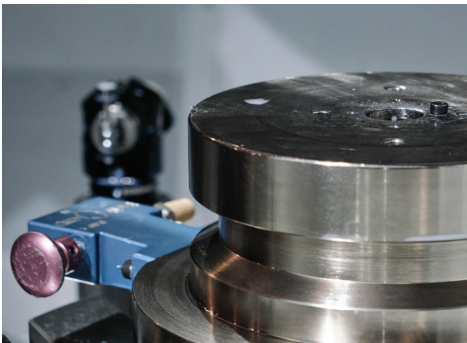
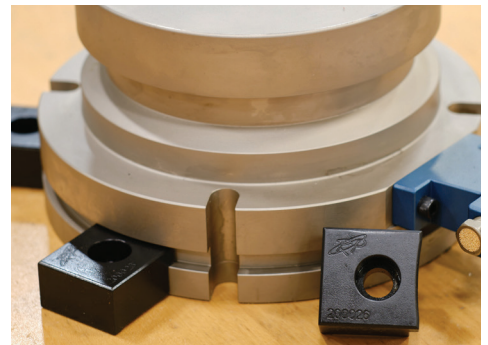


4-Axis Kwik-Clamp Part Number: **RKC-401**



RKC-401 TECHNICAL SPECIFICATIONS

- Repeatable within .0002 inch
- Face-plates: 6.437 inch Round surface with .313 inch I.D. bushings located 2.5 inch and 4.0 inch apart with a pull stud through the middle
- Indexer is required to have a through hole with a 1.50 inch minimum diameter
- Mounted to industry standard rotary table with 3 or 4 bolts installed into T-nuts. Piston housing, sits behind rotary with push/pull valve, clamping mechanism
- 4140 heat treated to 30 Rockwell
- Pistons: 6061 aluminum hard anodized
- Die Springs, 3 each, heat treated
- .313 inch bushings: D2 tool steel heat-treated to 60C Rockwell
- Drawbar: 4330 (aircraft quality) ground and polished, heat treated to 30 Rockwell and finished with chrome plating
- Internal Clamping Jaws: 4330 (aircraft quality) heat treated and finished with black oxide
- 8 inch internal piston with 4,000 lbs. clamping force at 100 psi
- Connects directly to machine air with all required fittings included
- Check valve included to prevent unclamping in case of loss of air
- Automation can easily be added by mounting two tapered pins to the gripper and two tapered holes to the workholding



KWIK-CLAMP ACCESSORIES

PART #	DESCRIPTION
RKC-100	HAAS CAT40 Retention Knob
RKC-101	Dowel Pin .3125 inch dia. – Standard
RKC-102	Dowel Pin .3125 inch dia. – Diamond
RKC-201	Raptor/Piranha to KWIK-CLAMP Adapter
RKC-202	Kwik-Clamp 5C Collet Adapter
RKC-203	Kwik-Clamp 6 inch Chuck Adapter

PART #	DESCRIPTION
RKC-204	Kwik-Clamp 8 inch Chuck Adapter
RKC-206	Kwik-Clamp 1.25x4x5 inches Fixture Blank
RKC-207	Kwik-Clamp 1.25x3.5x4 inches Fixture Blank
RKC-208	Kwik-Clamp Toe-Clamp



5-Axis Patent: US 11,478,901 B2

LIT2023-08



100 Quinter Farm Rd
Union, OH 45322

(800) 824-8333
raptorworkholding.com
te-co.com

800-824-8333 | raptorworkholding.com