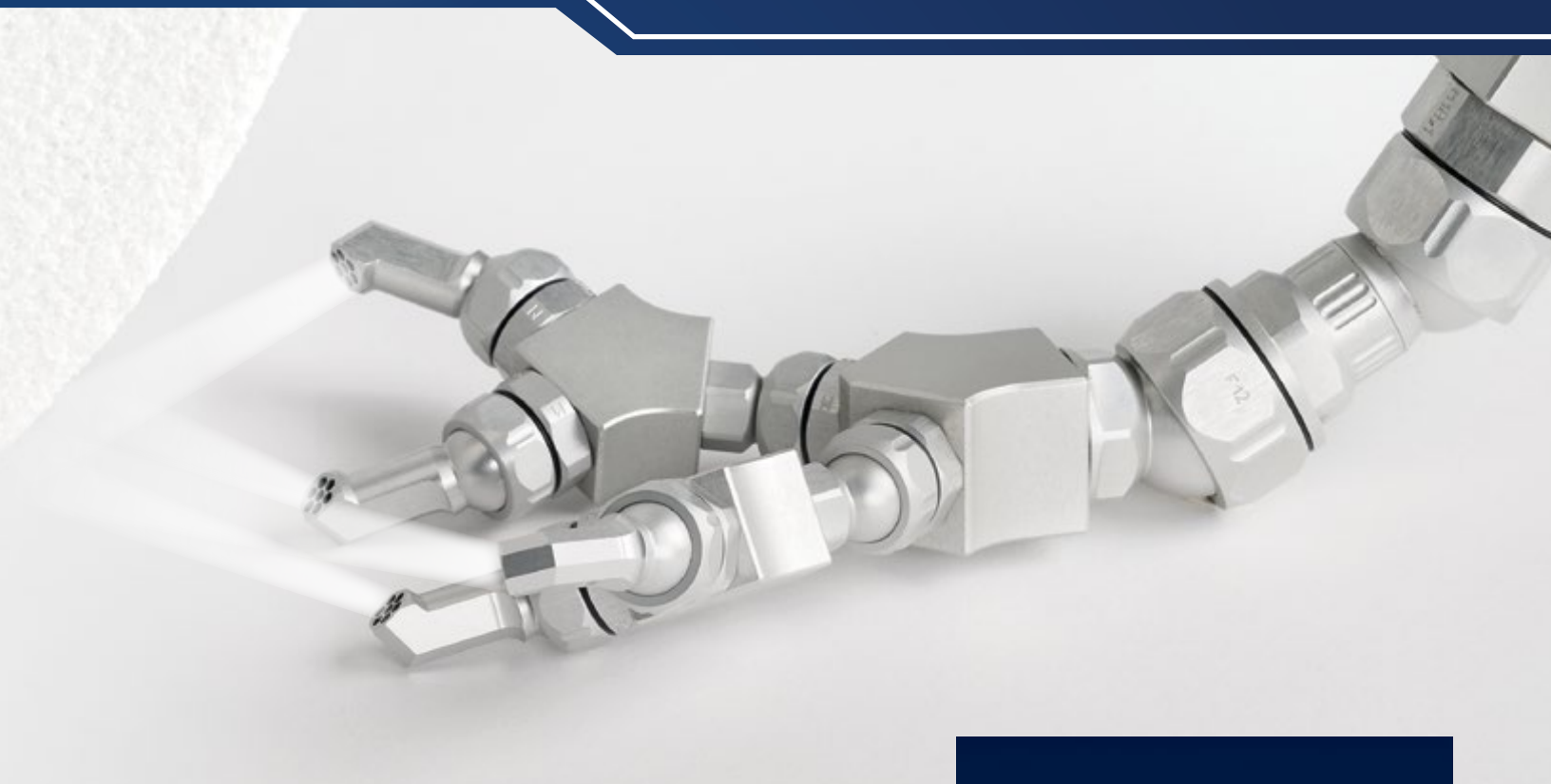




PIRANHA COOLING LINE®

For Extreme Cooling



The patented

**PIRANHA
COOLING LINE**

**Solves all cooling problems
on chip-removing processing**



Fits on all standard tool holders and CNC machines



Is flexible – adjustable without tools



Withstands pressures up to 80 bar



Versatile use (cooling, blowing out, suction)



Variably applicable and versatile in combination



Long lifespan thanks to anodized coating



Light weight



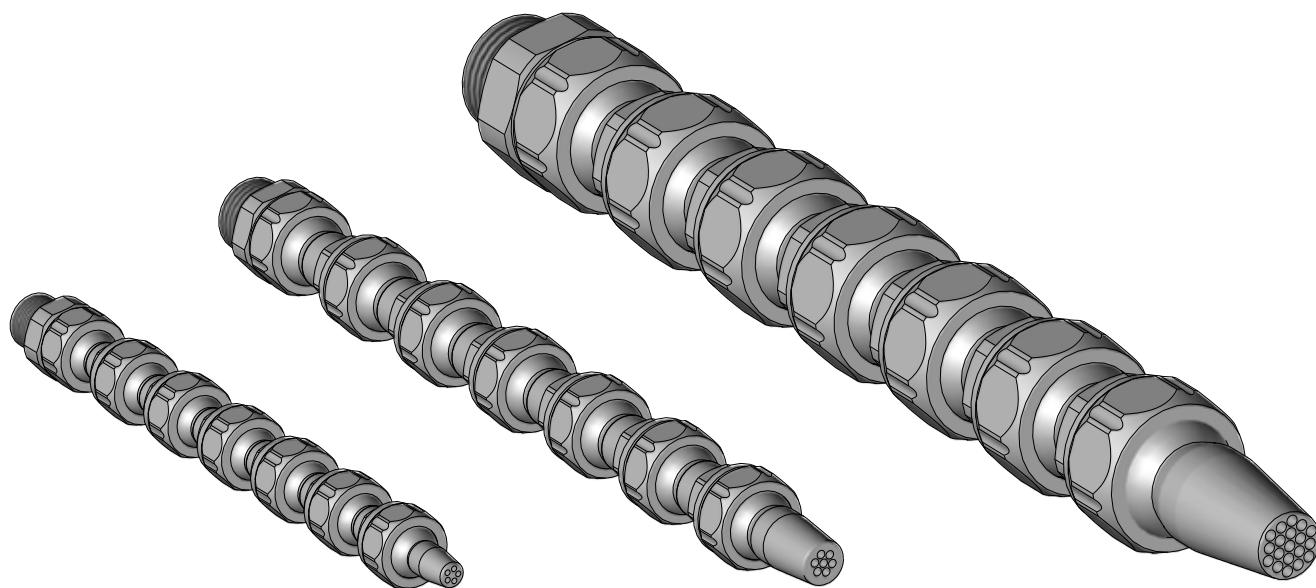
New design



100% Swiss made

Piranha Cooling Line

The Piranha Cooling Line is a unique and versatile jointed hose system for precise coolant supply. Made of high-strength anodized aluminum, it withstands pressures of up to 80 bar but can also be used at low pressures, where other cooling lubricant pipes wear prematurely. With our threaded connectors or ball connectors it can be installed on all common tool holders and CNC machines, mainly on turning machines, milling machines, grinding machines, sawing machines and filling plants. In addition to the cooling lubricant supply, the Cooling Line system is suitable for blowing out chucks or workpieces and for preheating material during 3D printing.



1/8" SYSTEM

Passage Ø 3,4 mm

Clamping torque
1.5 - 2.2 FT Lbs

page 3–5

1/4" SYSTEM

Passage Ø 5,5 mm

Clamping torque
1.8 - 2.2 FT Lbs

page 6–11

1/2" SYSTEM

Passage Ø 12,0 mm

Clamping torque
3.7 - 5.5 FT Lbs

page 12–15

FOR HIGH
PRESSURE
1160 PSI

Threaded connector

GA-9.5-1/8"

Threaded connector 1/8" G



GA-9.5-1/8" NPT

Threaded connector 1/8" NPT



GA-9.5-1/8" R

Threaded connector 1/8" R



GA-9.5-1/4" R

Threaded connector 1/4" R



GA-9.5-M8

Threaded connector M8



GA-9.5-M8x1

Threaded connector M8x1



GA-9.5-M10x1

Threaded connector M10x1



Ball connector

KA-10-20

Ball socket connector Ø 10 mm incl.
clamping ring - 20 mm long - for 1/8" System



KA-12-20

Ball socket connector Ø 12 mm incl.
clamping ring - 20 mm long - for 1/8" System



Spacer

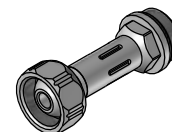
D-9.5-20

Spacer 20 mm



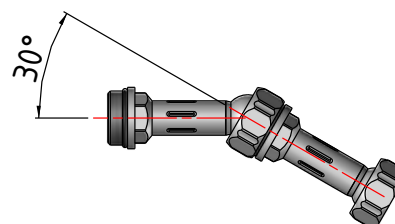
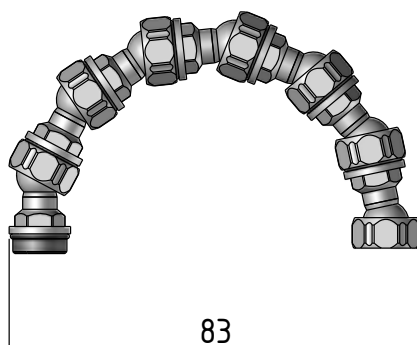
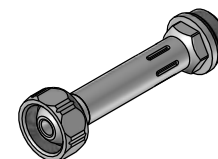
D-9.5-32

Spacer 32.5 mm



D-9.5-45

Spacer 45 mm



Nozzle

RD-9.5-1

Round nozzle Ø 1.0 mm



RD-9.5-2

Round nozzle Ø 2.0 mm



RD-9.5-3.4

Round nozzle Ø 3.4 mm



RD-9.5-5/1.0

Round nozzle multihole 5x Ø 1.0 mm



SDK-9.5/60°

Special nozzle 60° short



SDL-9.5/60°

Special nozzle 60° long



SDK-9.5/90°

Special nozzle 90° short



SDL-9.5/90°

Special nozzle 90° long



Accessories

M-SW13

Nut AF13



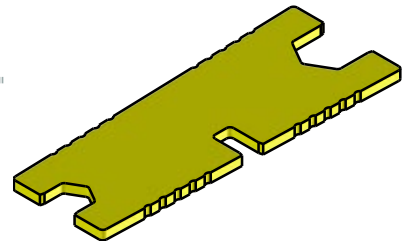
Ring 9.5

O-ring 1/8"



S-9/13

Hexagon wrench 1/8"



Elbows

L-1/8"

90° elbow

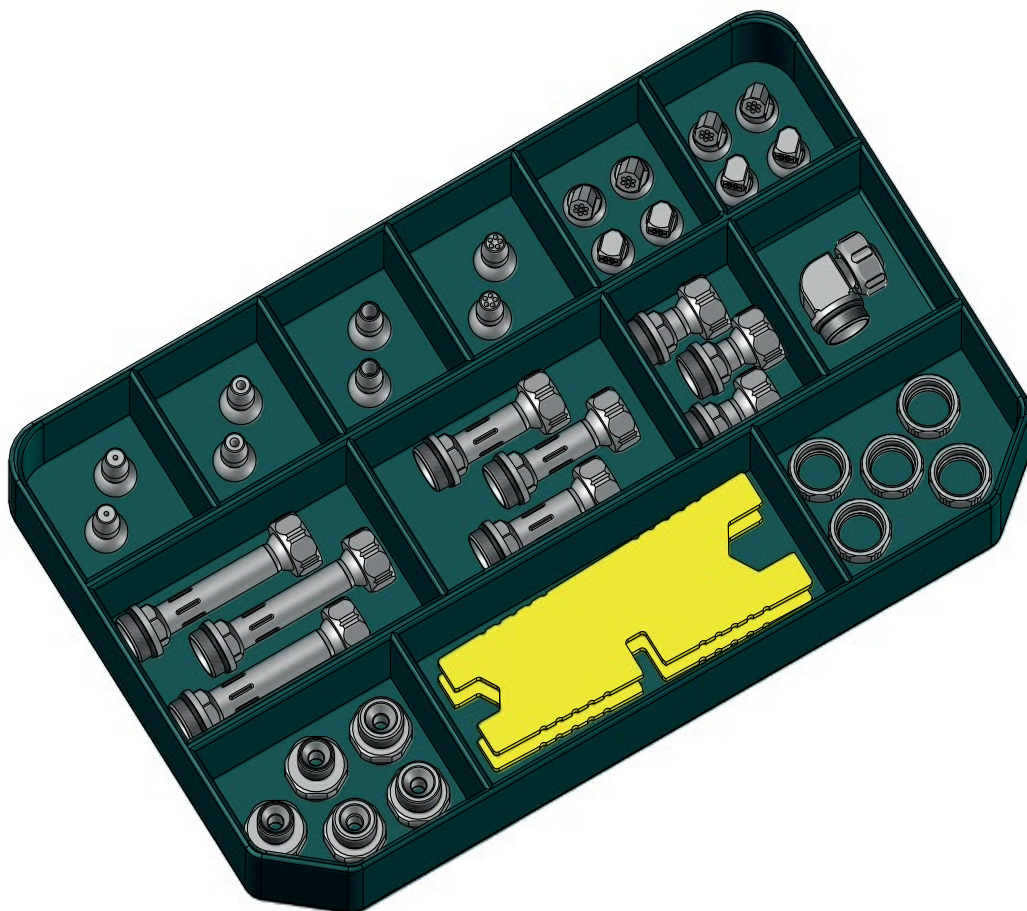


Set

PCL-1/8" SET 1 Cooling Line Starterkit 1/8"

Cooling Line starter kit 1/8" content:

- 2 x RD-9.5-1
- 2 x RD-9.5-2
- 2 x RD-9.5-3.4
- 2 x RD-9.5-5/1.0
- 2 x SDK-9.5/60°
- 2 x SDK-9.5/90°
- 2 x SDL-9.5/60°
- 2 x SDL-9.5/90°
- 3 x D-9.5/20
- 3 x D-9.5/32
- 3 x D-9.5/45
- 1 x L-1/8"
- 1 x GA-9.5-1/8"
- 1 x GA-9.5-1/8" NPT
- 1 x GA-9.5-M8
- 1 x GA-9.5-M8x1
- 1 x GA-9.5-M10x1
- 2 x S-9/13
- 5 x M-SW13



Threaded Connector

GA-1/8"

Threaded connector 1/8" G



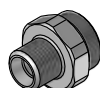
GA-1/8" NPT

Threaded connector 1/8" NPT



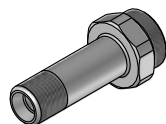
GA-R 1/8"

Threaded connector 1/8" R



GA-R1/8"-L

Threaded connector R1/8" long



GA-1/4"

Threaded connector 1/4"



GA-1/4" NPT

Threaded connector 1/4" NPT



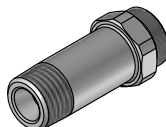
GA-R 1/4"

Threaded connector 1/4" R



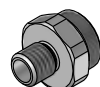
GA-R1/4"-L

Threaded connector GA-R1/4" long



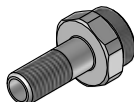
GA-M8

Threaded connector M8



GA-M8-L

Threaded connector M8 long



GA-M10

Threaded connector M10



GA-M10x1

Threaded connector M10x1



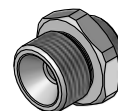
GA-M12x1

Threaded connector M12x1



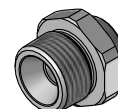
GA-3/8" -1/4"

Threaded connector 3/8" G with reduction to 1/4" system



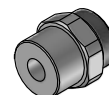
GA-3/8" R -1/4"

Threaded connector 3/8" R with reduction to 1/4" system



GA-R

Threaded connector blank Ø 14 mm for production of customized thread



Ball Connector

KA-12-28

Ball socket connector Ø 12 mm incl.
clamping ring - 28 mm long - for 1/4" System



KA-14-28

Ball socket connector Ø 14 mm incl.
clamping ring - 28 mm long - for 1/4" System



KA-15-28

Ball socket connector Ø 15 mm incl.
clamping ring - 28 mm long - for 1/4" System



R-12

Clamping ring Ø 12 mm



SDK-1260

Special nozzle 60° short - ball Ø 12 mm



SDL-1260

Special nozzle 60° long - ball Ø 12 mm



R-12.5

Clamping ring Ø 12.5 mm
Applicable with standard 1/4" nozzles



R-14

Clamping ring Ø 14 mm



SDK-1460

Special nozzle 60° short - ball Ø 14 mm



SDL-1460

Special nozzle 60° long - ball Ø 14 mm



RDK-14715

Round nozzle multihole - ball Ø 14 mm



R-15

Clamping ring Ø 15 mm



SDK-1560

Special nozzle 60° short - ball Ø 15 mm



SDL-1560

Special nozzle 60° long - ball Ø 15 mm



RDK-15715

Round nozzle multihole - ball Ø 15 mm



Spacer

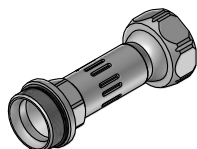
D-12.5/28

Spacer 28 mm



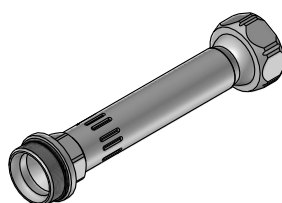
D-12.5/43

Spacer 43 mm



D-12.5/70

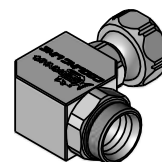
Spacer 70 mm



Elbows

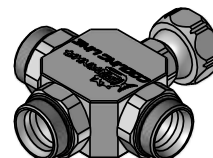
L-12.5

90° elbow



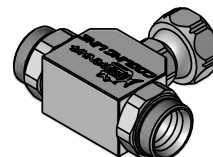
Quatro-12.5

Quatro distribution block



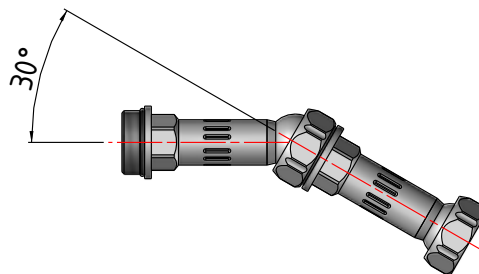
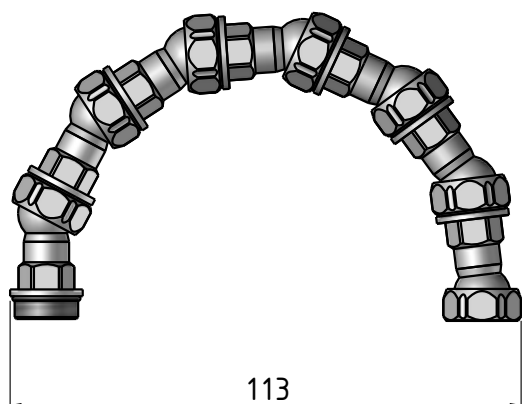
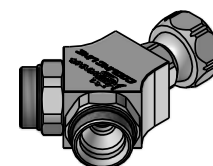
T-12.5

T-distributor



Y-12.5

Y-distributor



Nozzle

RD-12.5-1.5

Round nozzle Ø 1.5 mm



RD-12.5-3.5

Round nozzle Ø 3.5 mm



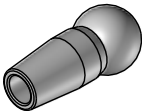
RD-12.5-4.5

Round nozzle Ø 4.5 mm



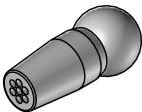
RD-12.5-5.5

Round nozzle Ø 5.5 mm



RD-12.5-7/1.5

Round nozzle multihole 7x Ø 1.5 mm



RD-12.5-3/2

Round nozzle 3x Ø 2.0 mm



RD-12.5-4/1.5

Round nozzle 4x Ø 1.5 mm



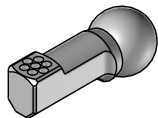
SDK-12.5/90°

Special nozzle 90° short



SDL-12.5/90°

Special nozzle 90° long



SDK-12.5/60°

Special nozzle 60° short



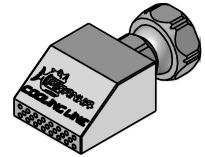
SDL-12.5/60°

Special nozzle 60° long



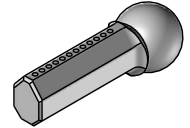
FD-12.5-20

Flat nozzle 20 mm



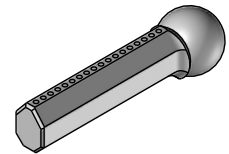
LDK-12.5-12x1

Diagonal nozzle short 12x Ø 1 mm



LDL-12.5-18x1

Diagonal nozzle long 18x Ø 1 mm



Accessories

M-SW16

Nut AF16



D-SW16

Cap AF16



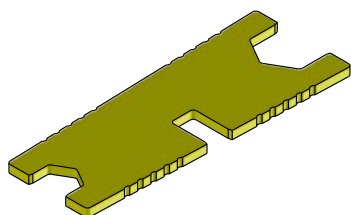
Ring 12.5

O-ring 1/4"



S-11/16

Hexagon wrench 1/4"



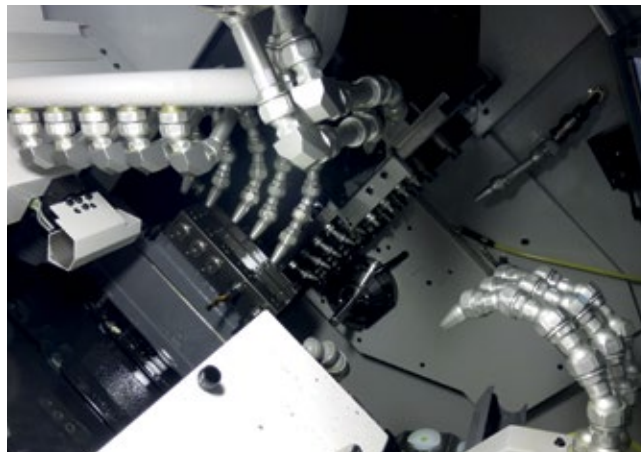
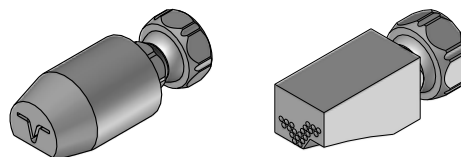
H-12.5

Ball valve 1/4"



Customized products

Can be produced by request.

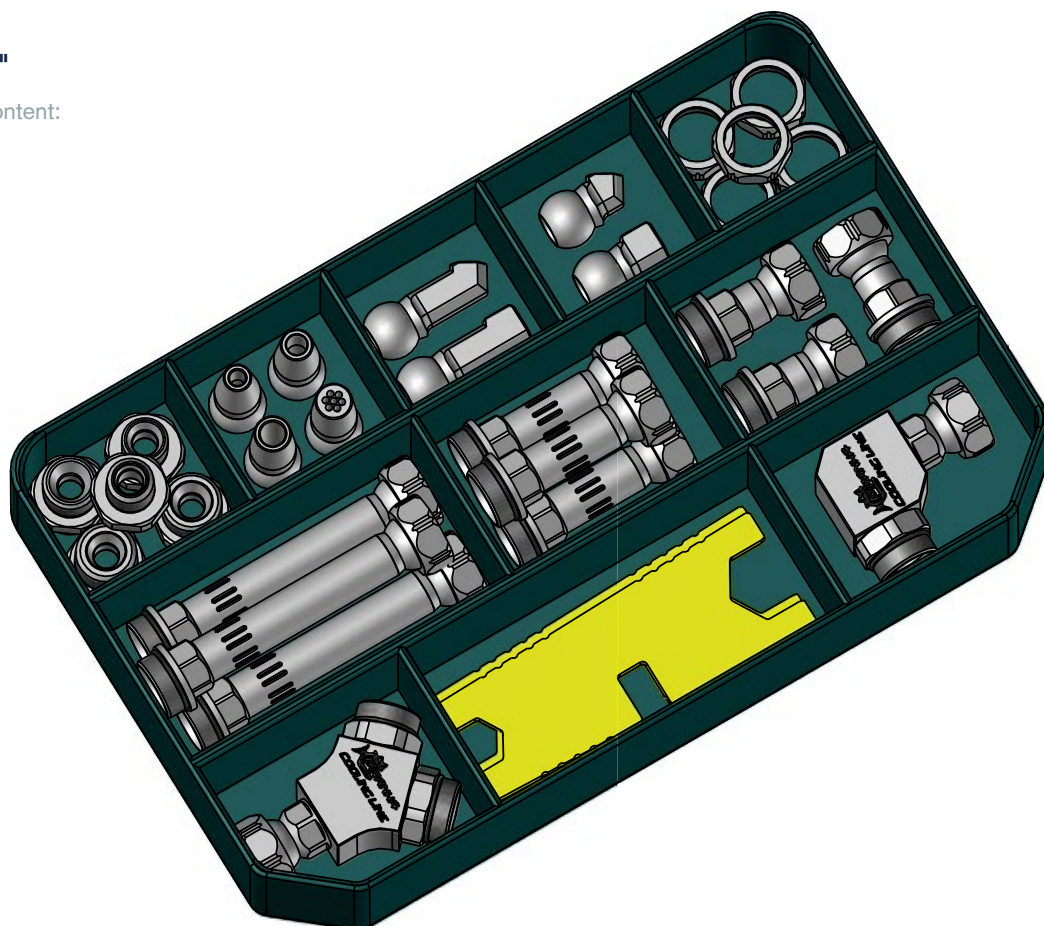


Sets

PCL-1/4 SET 1 Cooling Line Starterkit 1/4"

Cooling Line starter kit 1/4" content:

- 1 x GA-1/4"
- 1 x GA-1/4" NPT
- 1 x GA-1/8" NPT
- 1 x GA-M10x1
- 1 x GA-M12x1
- 1 x RD-12.5-3.5
- 1 x RD-12.5-4.5
- 1 x RD-12.5-5.5
- 1 x RD-12.5-7/1.5
- 1 x SDL-12.5/60°
- 1 x SDL-12.5/90°
- 1 x SDK-12.5/60°
- 1 x SDK-12.5/90°
- 5 x M-SW16
- 3 x D-12.5/28
- 3 x D-12.5/43
- 3 x D-12.5/70
- 1 x Y-12.5
- 2 x S-11/16
- 1 x L-12.5

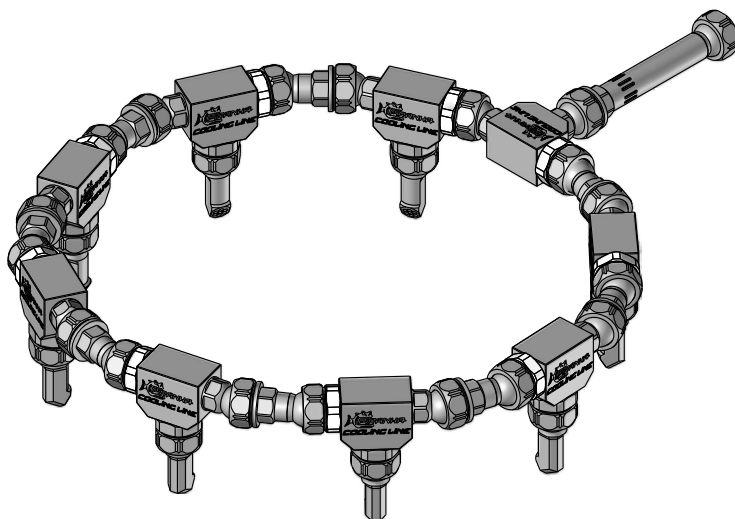


CR-12.5-8

Cooling ring with 8 nozzles

Composed by:

- 1 x D-12.5/70
- 9 x T-12.5 special
- 9 x D-12.5/28
- 8 x M-SW16
- 8 x SDL-12.5/60°

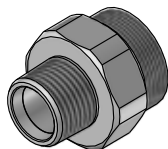


FOR HIGH
PRESSURE
1160 PSI

Threaded Connector

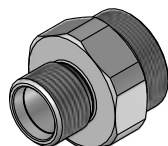
GA-22-3/8" NPT

Threaded connector 3/8" NPT



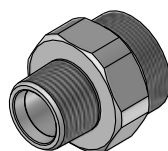
GA-22-3/8"

Threaded connector 3/8"



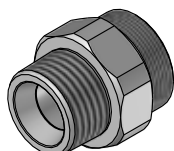
GA-22-R-3/8"

Threaded connector 3/8" R



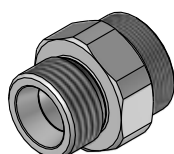
GA-22-1/2" NPT

Threaded connector 1/2" NPT



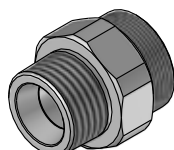
GA-22-1/2"

Threaded connector 1/2" G



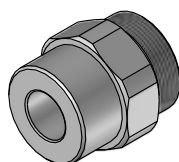
GA-22-R 1/2"

Threaded connector 1/2" R



GA-R-22

Threaded connector blank Ø 24 mm for production of customized thread



GA-3/8" -1/4"

Threaded connector 3/8" G with reduction to 1/4" system



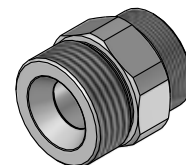
GA-3/8" R -1/4"

Threaded connector 3/8" R with reduction to 1/4" system



GA-3/4"-1/2"

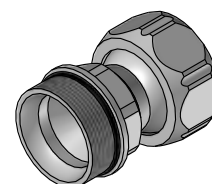
Threaded connector 3/4" G with reduction to 1/2" system



Spacer

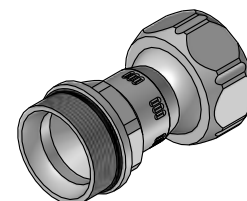
D-22-38

Spacer 38 mm



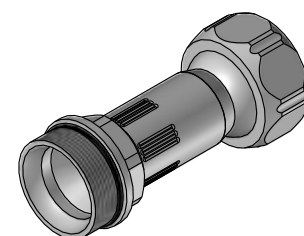
D-22-46

Spacer 46.5 mm



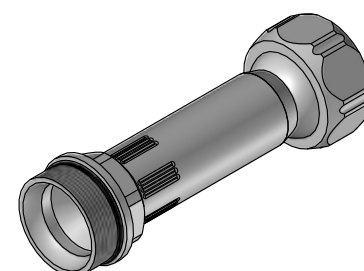
D-22-63

Spacer 63.5 mm



D-22-80

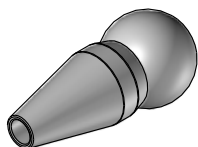
Spacer 80 mm



Nozzle

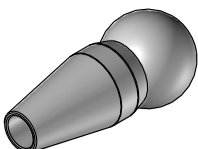
RD-22-6

Round nozzle Ø 6 mm



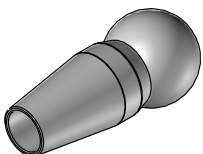
RD-22-8

Round nozzle Ø 8 mm



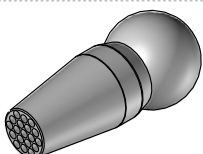
RD-22-10

Round nozzle Ø 10 mm



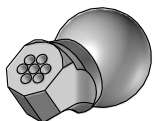
RD-22-12-19.2

Round nozzle multihole 19x Ø 2 mm



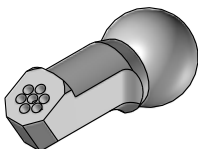
SDK-22/60°

Special nozzle 60° short



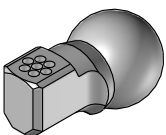
SDL-22/60°

Special nozzle 60° long



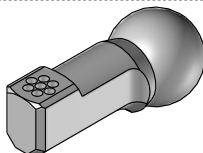
SDK-22/90°

Special nozzle 90° short



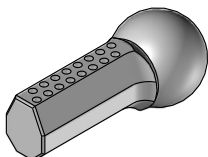
SDL-22/90°

Special nozzle 90° long



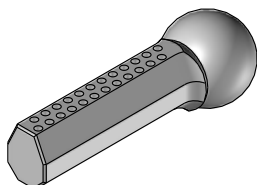
LDK-22-16x2

Diagonal nozzle short 16x Ø 2 mm



LDL-22-24x2

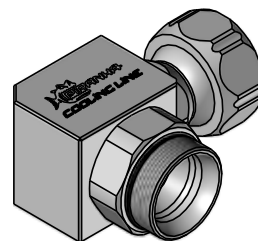
Diagonal nozzle long 24x Ø 2 mm



Elbows

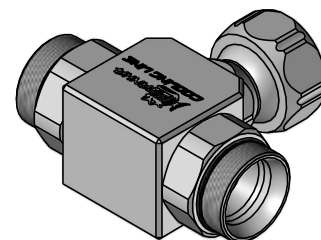
L-1/2"

90° elbow



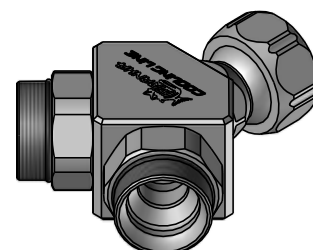
T-1/2"

T-distributor



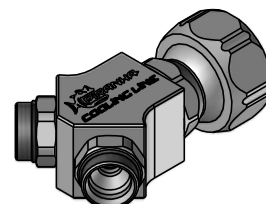
Y-1/2"

Y-distributor



Y-1/2"-1/4"

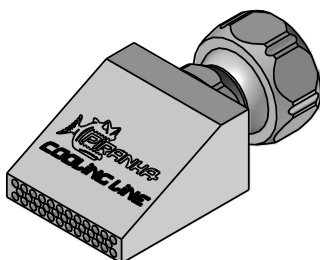
Y-distributor



Flat Nozzle

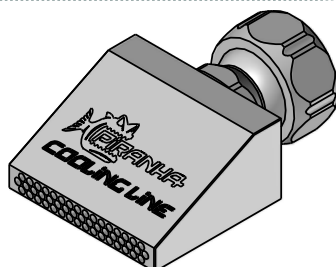
FD-22-30

Flat nozzle 30 mm



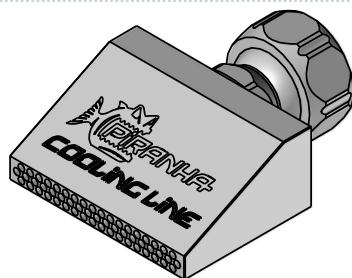
FD-22-40

Flat nozzle 40 mm



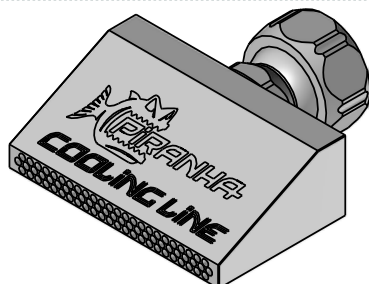
FD-22-50

Flat nozzle 50 mm



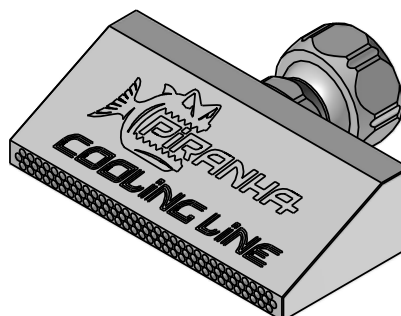
FD-22-60

Flat nozzle 60 mm



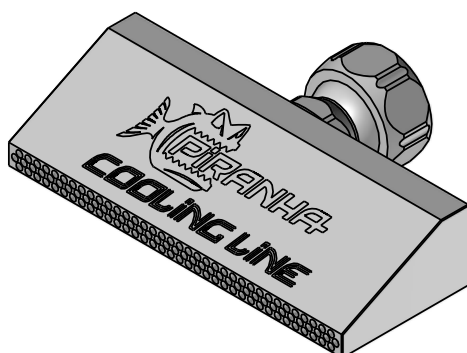
FD-22-80

Flat nozzle 80 mm



FD-22-100

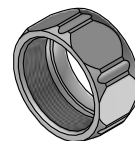
Flat nozzle
100 mm



Accessories

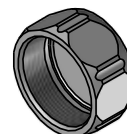
M-SW27

Nut AF27



D-SW27

Cap AF27



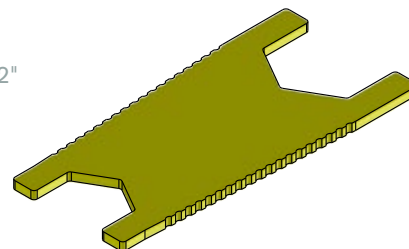
Ring 22

O-ring 1/2"



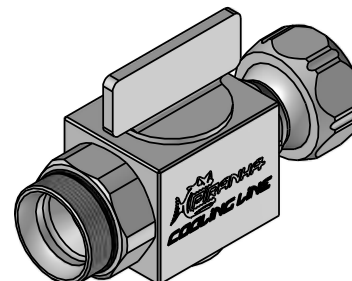
S-21/27

Hexagon Wrench 1/2"



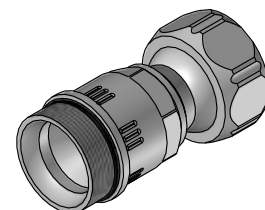
H-22

Ball valve 1/2"



RVD-22

Check valve integrated in spacer

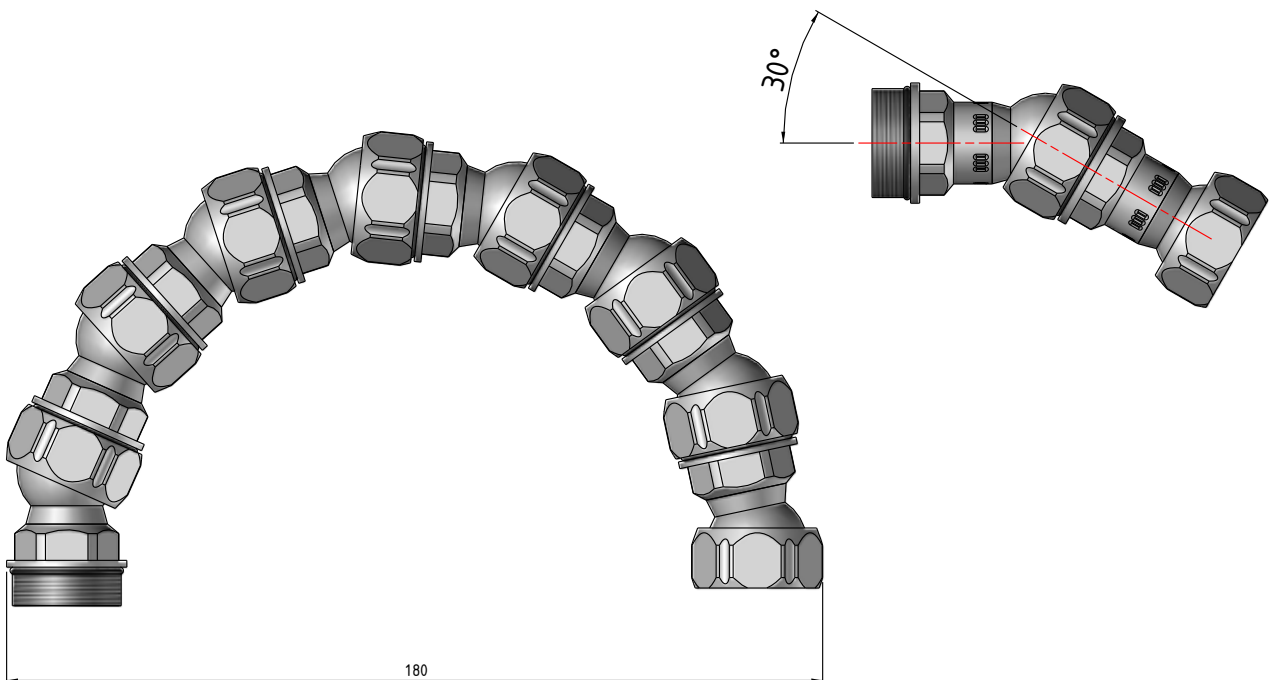
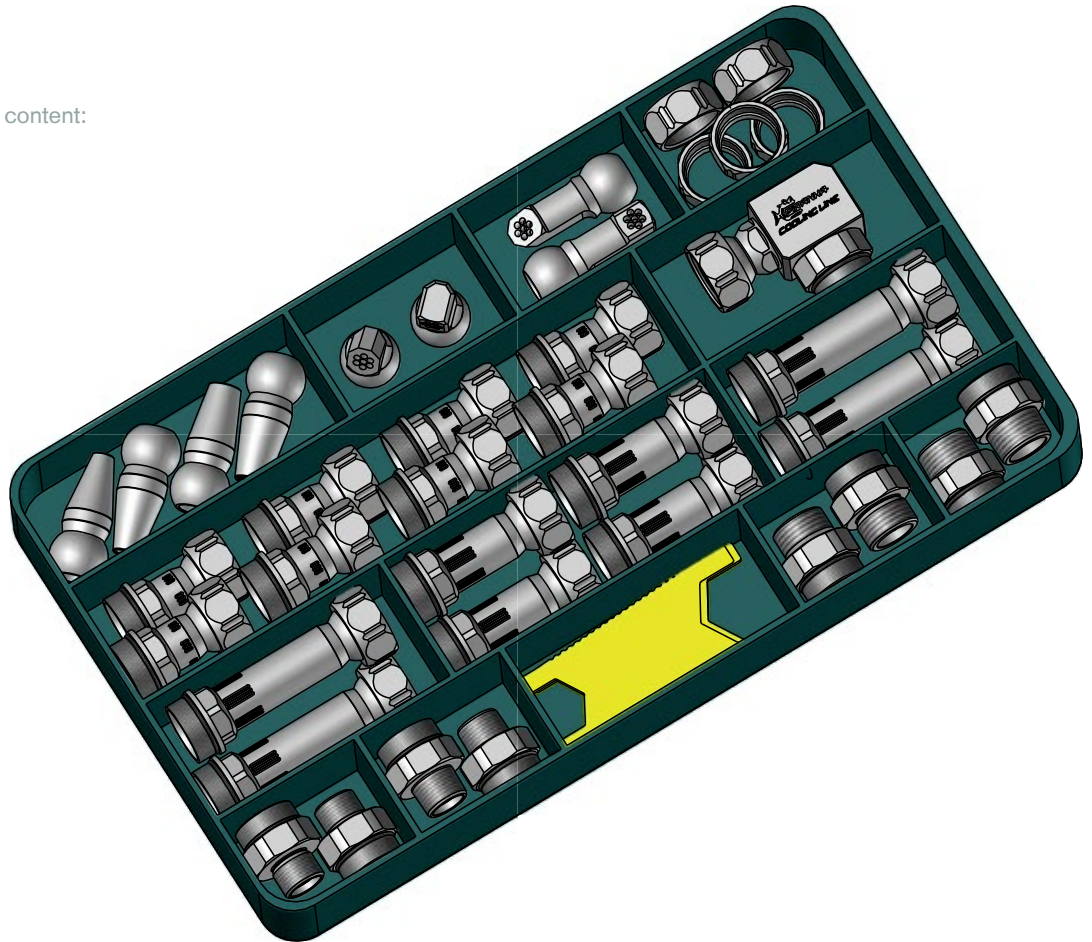


Set

PCL-1/2" SET 1

Cooling Line starter kit 1/2" content:

- 1 x RD-22-6
- 1 x RD-22-8
- 1 x RD-22-10
- 1 x RD-22-12-19.2
- 1 x SDK-22/60
- 1 x SDK-22/90
- 1 x SDL-22/60
- 1 x SDL-22/90
- 5 x M-SW27
- 8 x D-22-46
- 1 x L-1/2"
- 4 x D-22-63
- 4 x D-22-80
- 2 x GA-22-1/2"
- 2 x GA-22-1/2" NPT
- 2 x GA-22-3/8"
- 2 x GA-22-3/8" NPT
- 2 x S-21/27





info@piranha-clamp.com · www.piranha-clamp.com



All illustrations are for reference only. The datas are subject to change. A copy of the product, whether in whole or in part, and the related technologies is prohibited.
Piranha Cooling Line® is a registered name. Technical amendments and errors may occur.

RAPTOR™
WORKHOLDING PRODUCTS

Raptor Workholding Products
100 Quinter Farm Road • Union, Ohio 45322
1-800-824-8333 • RaptorWorkholding.com

Scan to watch
Piranha Cooling
Line in action!

