



PIRANHA-CLAMP®

For Extreme Power



Highest clamping force due to the gliding bars



No pre-clamping



Best quality and accuracy



Minimum material loss due to 3 mm clamping depth



Lowest construction height



Open construction for quick cleaning



High repetition accuracy 0.01 mm



Hardened functional surface



EMPA tested spindle on tension for extreme clamping forces 1350 Nm²



100% Swiss Made

The patented

**PIRANHA CLAMP
CENTERING VISE**

Solve all clamp problems on
chip-removing processing

Centering vise – Gepard 170

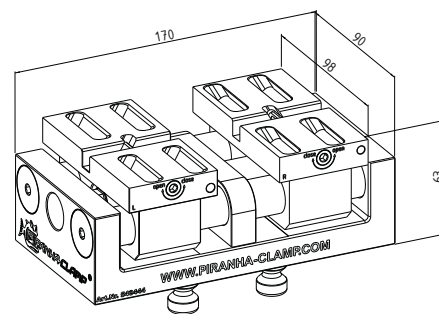
The ultimate quick-change-system for high end machining

Art. 540444

CV Gepard 170 incl. clamping jaws aluminium XS 170

170 x 90 x 64 mm – 5.70 kg (Vise)

50 x 98 x 21 mm – 0.60 kg (Jaws)



Eccentric pin for clamping jaws
change within seconds

Torquing range for eccentric pin:
max. 7 Ft Lbs aluminium jaws /
18 Ft Lbs steel and hard jaws

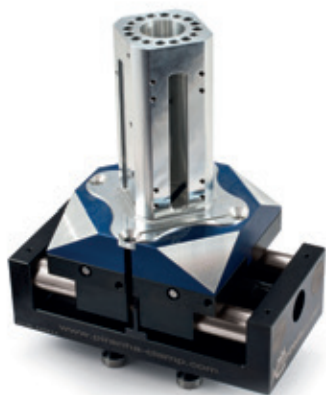
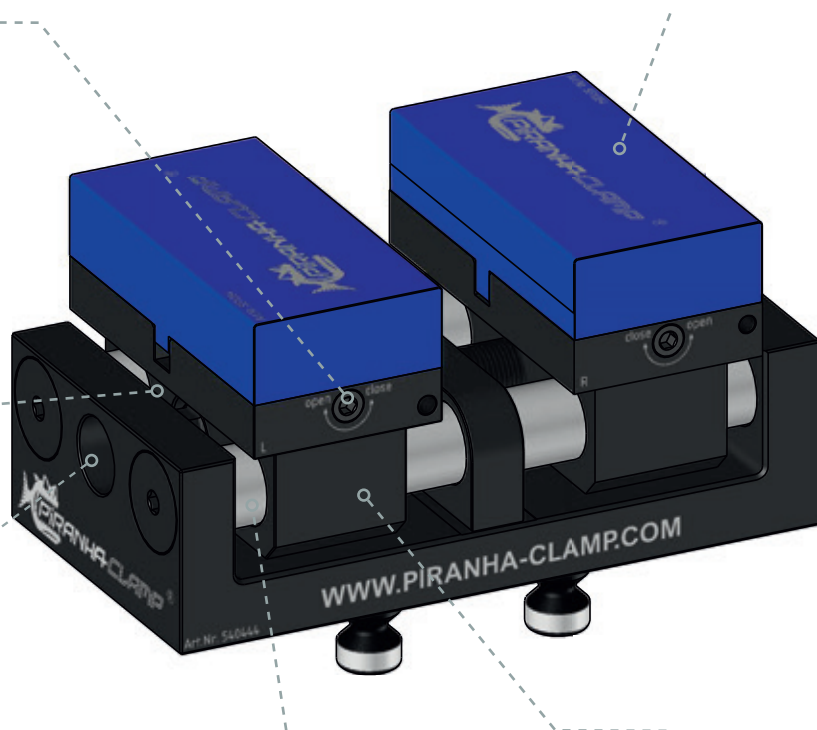
Alu jaws for individual clamping

Thermally treated spindle
for high pressure

Torquing range for
clamping pressure up to
73 Ft Lbs

Hardened and coated gliding
bars for more precision

High-precision base jaw for
repetition accuracy 0.01 mm



Example: Complex 5-axis part with contour clamping on alu clamping jaws

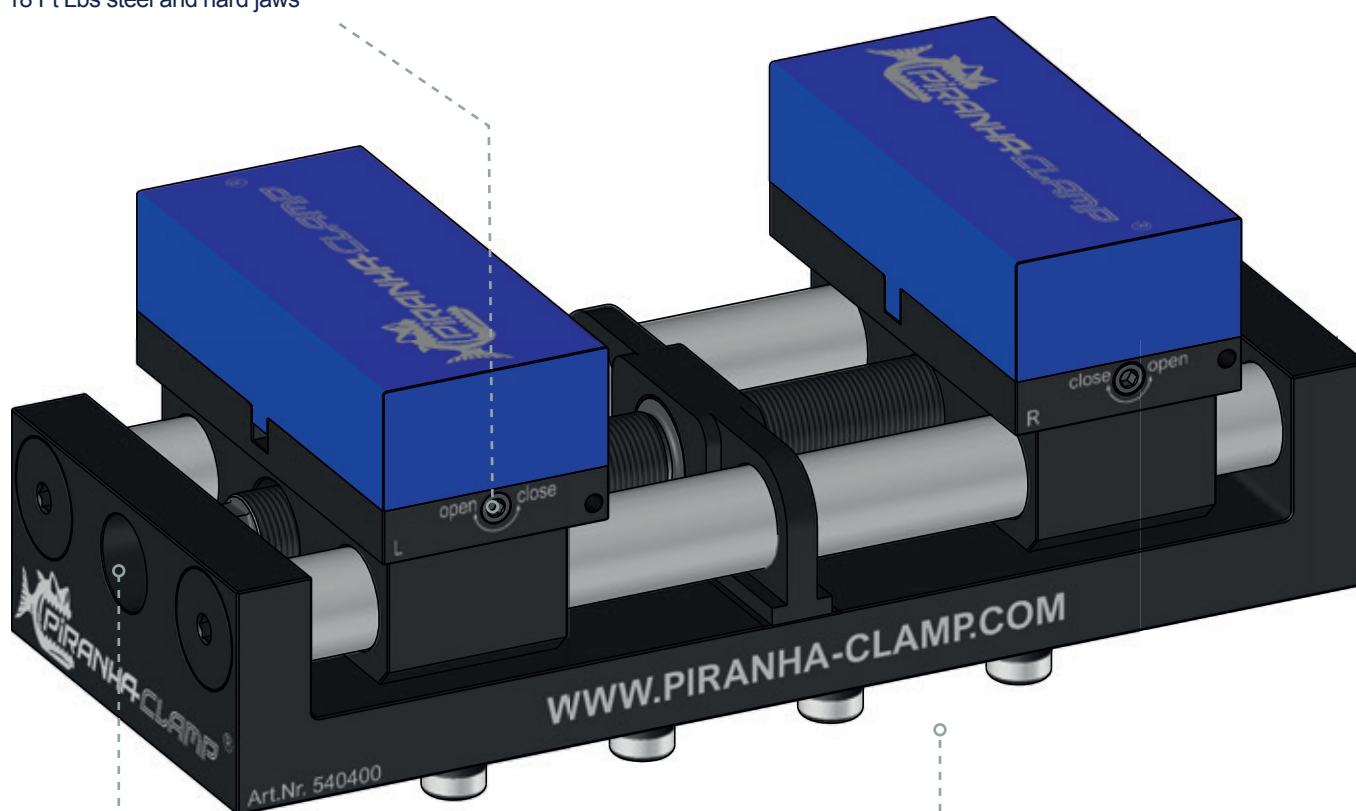
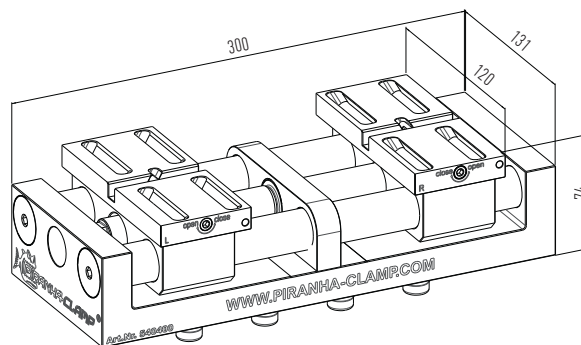
Centering vise – Gepard 300

The ultimate quick-change-system for high end machining

Art. 540400

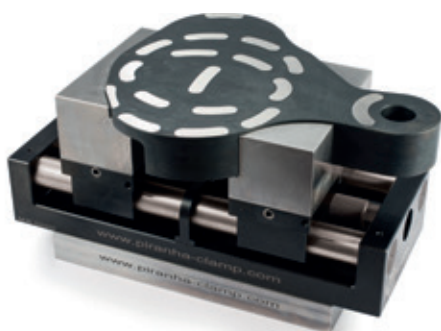
CV Gepard 300 incl. clamping jaws aluminium XS 300
300 x 120 x 74 mm / 14.30 kg (Vise)
60 x 131 x 31 mm / 1.10 kg (Jaws)

Torquing range for eccentric pin:
max. 7 Ft Lbs aluminium jaws /
18 Ft Lbs steel and hard jaws



Torquing range for clamping
pressure up to 73 Ft Lbs

One vise for raw parts
to finished parts

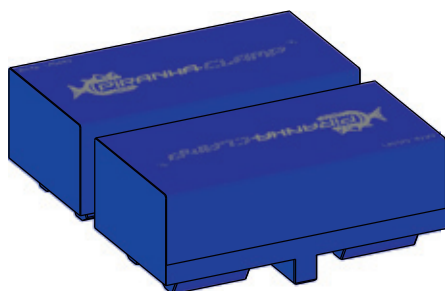


Example: Hardened part with contour clamping on steel clamping jaws

Clamping jaws to

Gepard 170

Gepard 300

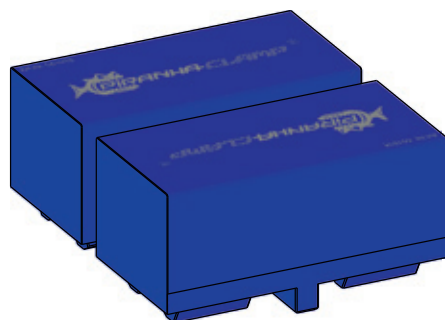


Art. 540443

Set clamping jaws aluminium S 170
50 x 98 x 31* mm / 0.80 kg
Clamping range 0 – 155 mm

Art. 540424

Set clamping jaws Alu S 300
60 x 131 x 41* mm / 1.60 kg
Clamping range 0 – 268 mm

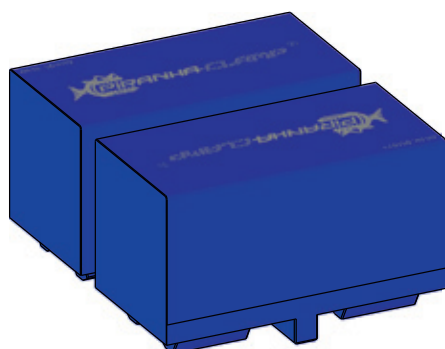


Art. 551018

Set clamping jaws Alu M 170
50 x 98 x 41* mm / 1.00 kg
Clamping range 0 – 155 mm

Art. 551020

Set clamping jaws Alu M 300
60 x 131 x 51* mm / 2.10 kg
Clamping range 0 – 268 mm



Art. 551019

Set clamping jaws Alu L 170
50 x 98 x 51* mm / 1.20 kg
Clamping range 0 – 155 mm

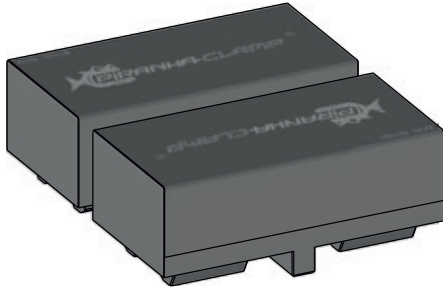
Art. 551021

Set clamping jaws Alu L 300
60 x 131 x 61* mm / 2.60 kg
Clamping range 0 – 268 mm

Clamping jaws to

Gepard 170

Gepard 300

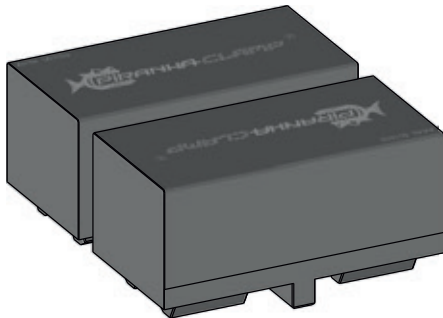


Art. 551039

Set clamping jaws soft steel S 170
50 x 98 x 31* mm / 1.85 kg
Clamping range 0 – 155 mm

Art. 551045

Set clamping jaws soft steel S 300
60 x 131 x 41* mm / 3.50 kg
Clamping range 0 – 268 mm

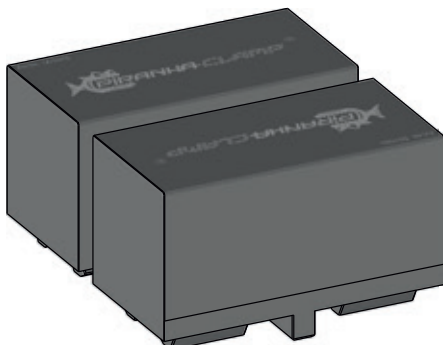


Art. 551033

Set clamping jaws soft steel M 170
50 x 98 x 41* mm / 2.60 kg
Clamping range 0 – 155 mm

Art. 551046

Set clamping jaws soft steel M 300
60 x 131 x 51* mm / 5.00 kg
Clamping range 0 – 268 mm



Art. 551042

Set clamping jaws soft steel L 170
50 x 98 x 51* mm / 3.40 kg
Clamping range 0 – 155 mm

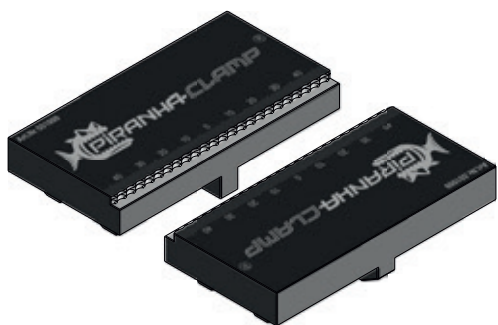
Art. 551047

Set clamping jaws soft steel L 300
60 x 131 x 61* mm / 6.80 kg
Clamping range 0 – 268 mm

Clamping jaws to

Gepard 170

Gepard 300



Art. 551009

Set clamping jaws Snapper short 170
50 x 98 x 22 mm / 1.10 kg
Clamping range 7 – 61 mm

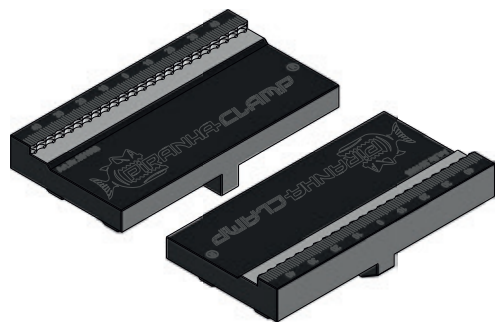
Art. 551007

Set clamping jaws Snapper short 300
60 x 131 x 22 mm / 1.80 kg
Clamping range 7 – 153 mm



Art. 551123

Set clamping jaws Snapper medium
50 x 98 x 22 / 1.00 kg
Clamping range 44 – 98 mm

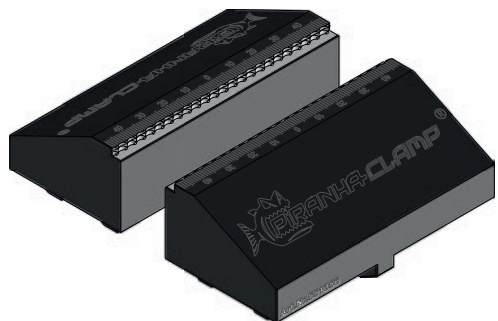


Art. 551008

Set clamping jaws Snapper long 170
50 x 98 x 22 mm / 0.90 kg
Clamping range 81 – 135 mm

Art. 551006

Set clamping jaws Snapper long 300
60 x 131 x 22 mm / 1.50 kg
Clamping range 101 – 247 mm



Art. 551056

Set clamping jaws Snapper
high-short 170
50 x 98 x 40 mm / 2.00 kg
Clamping range 7 – 61 mm

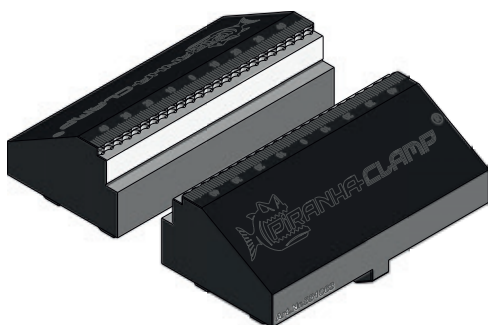
Art. 551058

Set clamping jaws Snapper
high-short 300
60 x 131 x 50 mm / 4.20 kg
Clamping range 7 – 153 mm

Clamping jaws to

Gepard 170

Gepard 300

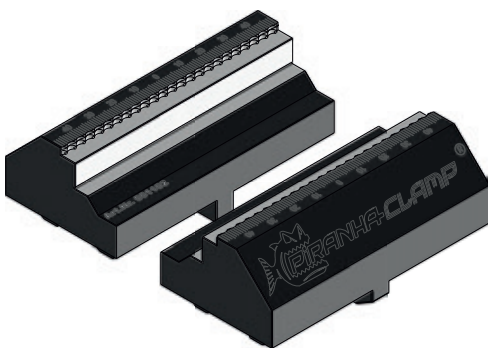


Art. 551063

Set clamping jaws hybrid
high – short 170
50 x 98 x 40 mm / 2.00 kg
Clamping range 10 – 65 mm
Top / 17 – 70 mm Snapper

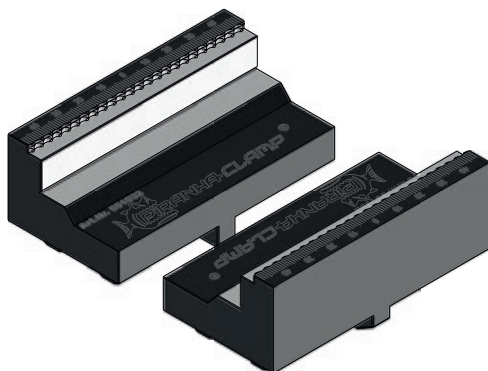
Art. 551057

Set clamping jaws hybrid
high – short 300
60 x 131 x 50 mm / 4.15 kg
Clamping range 11 – 157 mm
Top / 17 – 164 mm Snapper



Art. 551102

Set clamping jaws hybrid
high – medium 170
50 x 98 x 40 mm / 1.80 kg
Clamping range 37 – 91 mm
Top / 49 – 102 mm Snapper



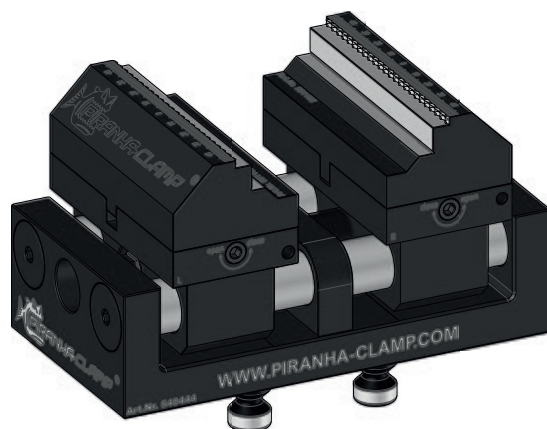
Art. 551032

Set clamping jaws hybrid
high – long 170
50 x 98 x 40 mm / 1.60 kg
Clamping range 70 – 124 mm
Top / 81 – 134 mm Snapper

Art. 551038

Set clamping jaws hybrid
high – long 300
60 x 131 x 50 mm / 3.40 kg
Clamping range 101 – 247 mm
Top / 95 – 241 mm Snapper

Example: CV Gepard 170 with clamping jaws hybrid high – medium



Clamping jaws to

Gepard 170

Gepard 300

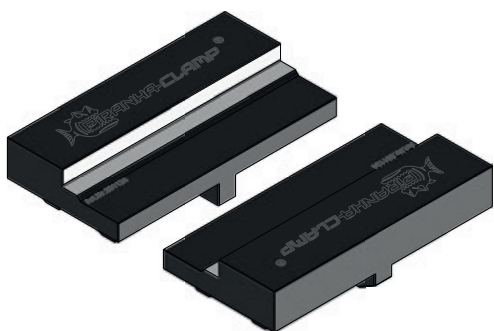


Art. 551005

Set clamping jaws Top short 170
50 x 98 x 25 mm / 1.30 kg
Clamping range 16 – 70 mm

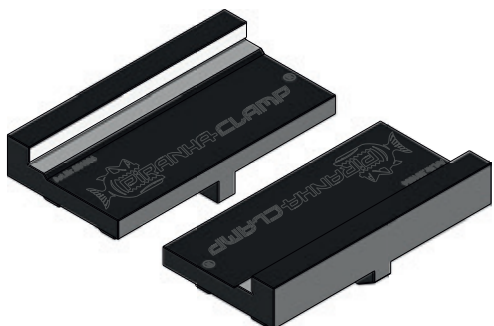
Art. 551003

Set clamping jaws Top short 300
60 x 131 x 25 mm / 2.15 kg
Clamping range 17 – 163 mm



Art. 551124

Set clamping jaws Top medium
50 x 98 x 25 / 1.10 kg
Clamping range 50 – 105 mm



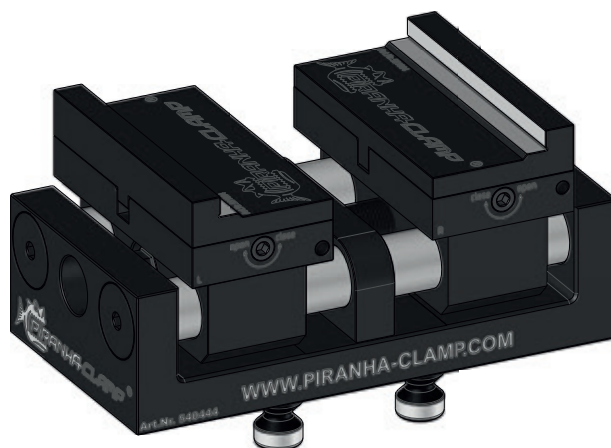
Art. 551004

Set clamping jaws Top long 170
50 x 98 x 25 mm / 0.85 kg
Clamping range 81 – 135 mm

Art. 551002

Set clamping jaws Top long 300
60 x 131 x 25 mm / 1.30 kg
Clamping range 101 – 247 mm

Example: CV Gepard 170 with clamping jaws Top long

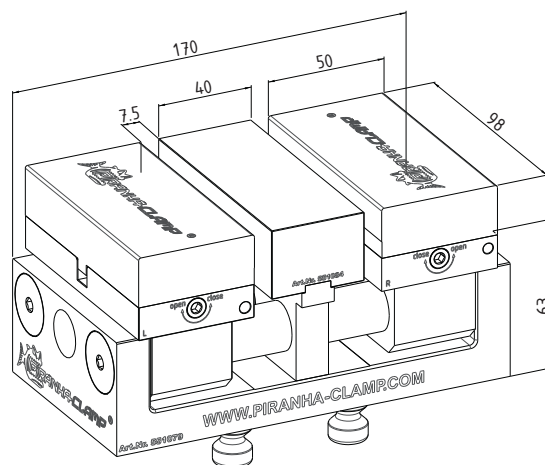


Double station Gepard 170

The ultimate quick-change-system for contemporaneous high end machining of 2 workpieces

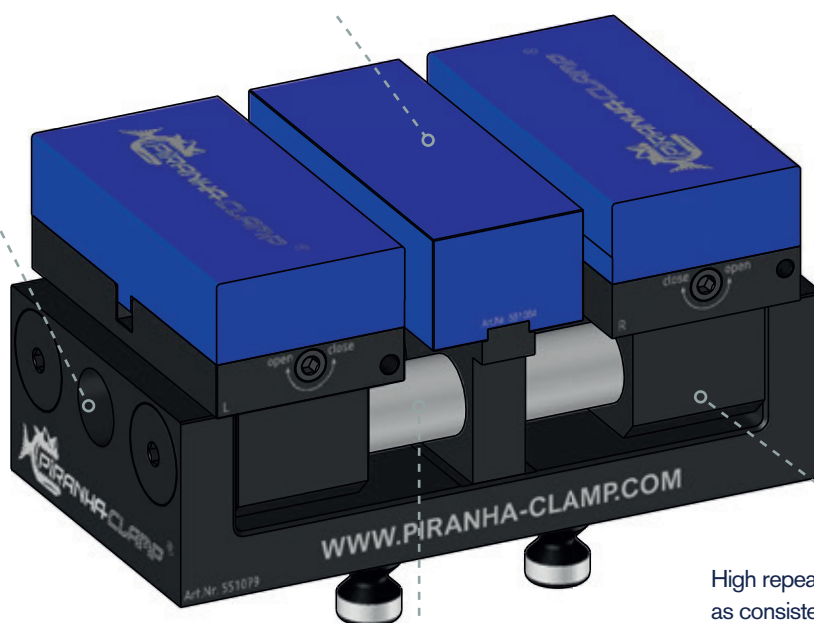
Art. 551079

Gepard 170 Double station
incl. clamping jaws DS aluminium XS 170
170 x 90 x 64 mm / 5.70 kg (Vise)
50 x 98 x 21 / 0.60 kg (Jaws l+r)
40 x 98 x 21 / 0.30 kg (Middle jaw)



Torquing range for
clamping pressure up to
73 Ft Lbs

Removable middle jaw



Set-up and working time reduction
by double clamping

High repeatability of 0.01 mm as well
as consistent clamping force for each
clamping process

Clamping jaws to Gepard 170 double station

Art. 551130

Set clamping jaws DS aluminium S 170
50 x 98 x 31* mm / 40 x 98 x 31* mm
1.30 kg
Clamping range
2x 0 – 75 mm

Art. 551131

Set clamping jaws DS aluminium M
170 50 x 98 x 41* mm / 40 x 98 x 41* mm
1.60 kg
Clamping range
2x 0 – 75 mm

Art. 551132

Set clamping jaws DS aluminium L 170
50 x 98 x 51* mm / 40 x 98 x 51* mm
1.90 kg
Clamping range
2x 0 – 75 mm

Double station Gepard 300

The ultimate quick-change-system for contemporaneous high end machining of 2 workpieces

Art. 551080

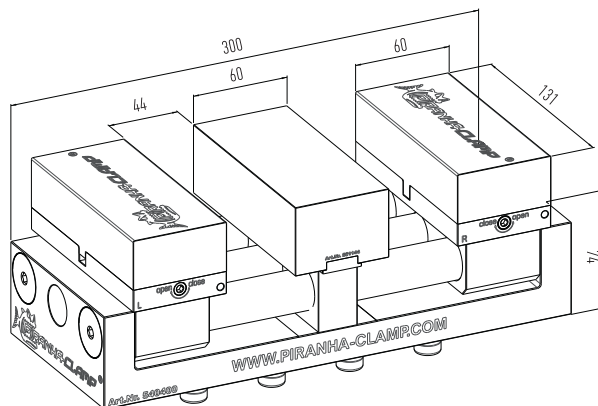
Gepard 300 Double station

incl. clamping jaws aluminium XS 300

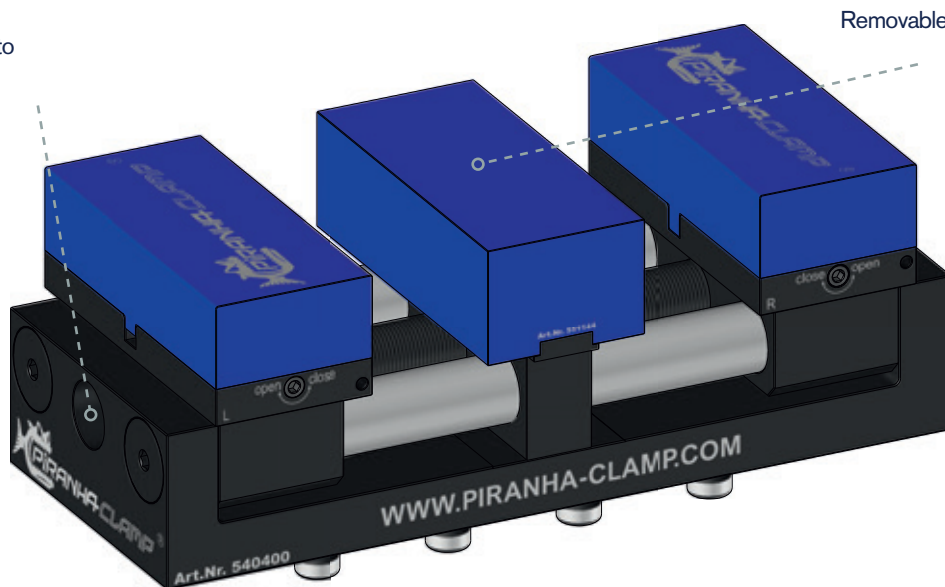
300 x 120 x 74 mm / 14.30 kg (Vise)

60 x 131 x 31 mm / 1.10 kg (Jaws l+r)

40 x 131 x 31 mm / 0.50 kg (Middle jaw)



Torquing range for
clamping pressure up to
73 Ft Lbs



Removable middle jaw

Set-up and working time reduction
by double clamping

High repeatability of 0.01 mm
as well as consistent clamping
force for each clamping process

Clamping jaws to Gepard 300 double station

Art. 551133

Set clamping jaws DS aluminium S 300

60 x 131 x 41* mm / 60 x 131 x 41* mm

2.40 kg

clamping range

2 x 0 – 132 mm

Art. 551134

Set clamping jaws DS aluminium M 300

60 x 131 x 51* mm / 60 x 131 x 51* mm

3.10 kg

clamping range

2 x 0 – 132 mm

Art. 551135

Set clamping jaws DS aluminium L 300

60 x 131 x 61* mm / 60 x 131 x 61* mm

3.90 kg

clamping range

2 x 0 – 132 mm

Centering vise Snapper 170

The most biting of its kind for raw part machining

Art. 540362

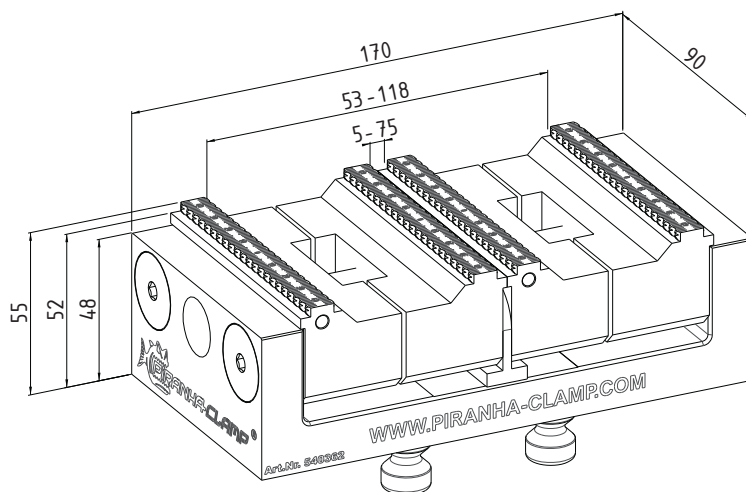
CV Snapper 170

170 x 90 x 55 mm – 4.50 kg

Art. 540446

CV Snapper 170 with higher jaws (+10 mm)

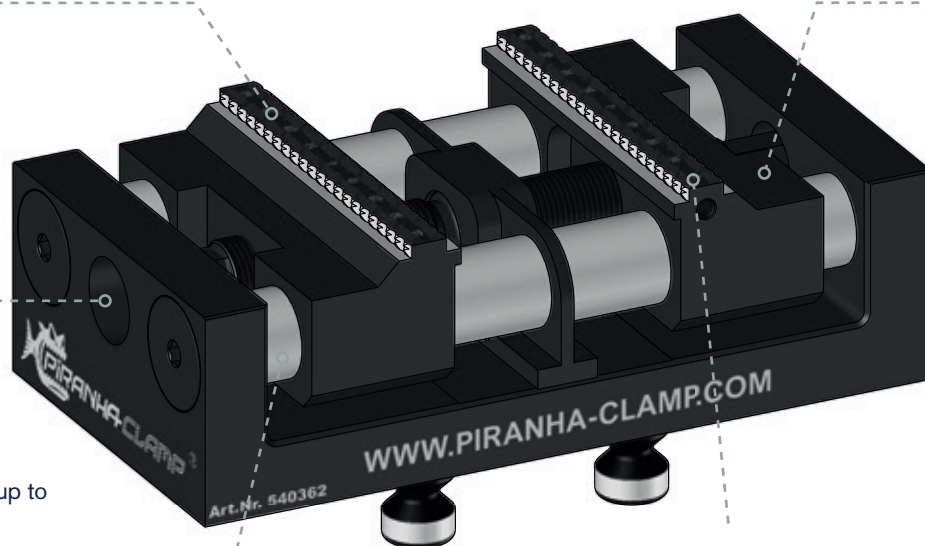
170 x 90 x 65 mm – 4.60 kg



Lowest construction height

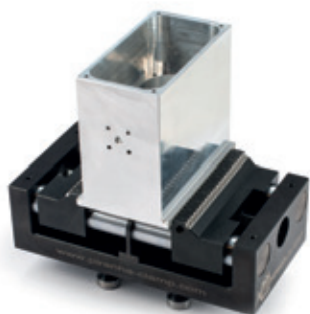
Thermally treated spindle for high pressure

Torquing range for clamping pressure up to 147 Ft Lbs



Hardened and coated gliding bars for more precision

Two rows of teeth for form and force closure with pull-down effect on 3 mm



Example: 5-side machining with raw part clamping

Double station Snapper 170

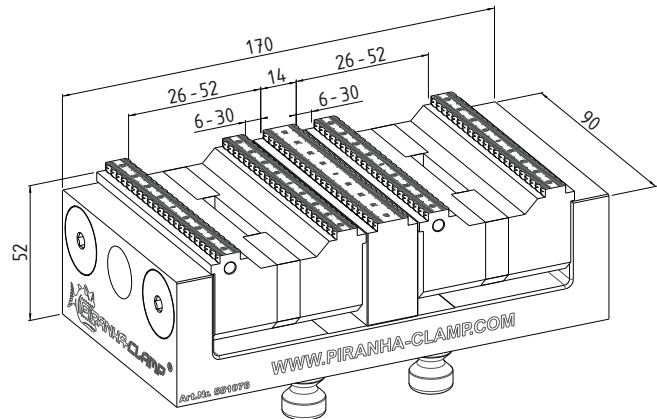
The most biting of its kind for raw part machining of 2 work pieces

Art. 551076

Snapper 170 double station
170 x 90 x 55 mm – 5.00 kg

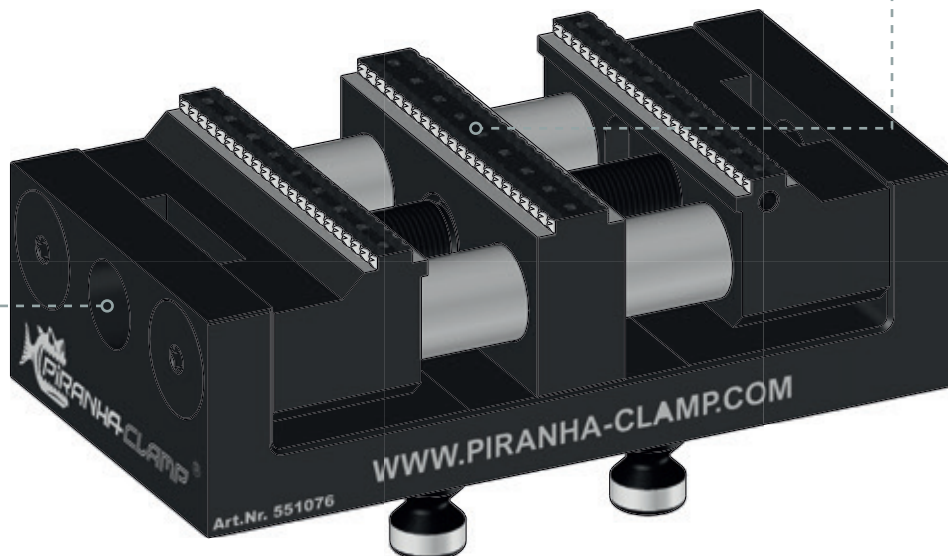
Art. 551075

Snapper 170 double station with higher jaws (+10 mm)
170 x 90 x 65 mm – 5.10 kg



Torquing range for
clamping pressure up to
147 Ft Lbs

Fixed middle jaw



Set-up and working time reduction
by double clamping

High repeatability of 0.01 mm as well
as consistent clamping force for each
clamping process

Centering vise Snapper 300

The most biting of its kind for raw part machining

Art. 540401

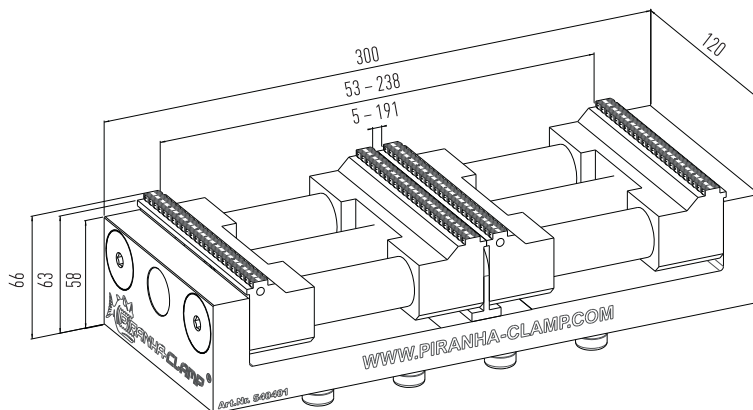
CV Snapper 300

300 x 120 x 66 mm – 11.50 kg

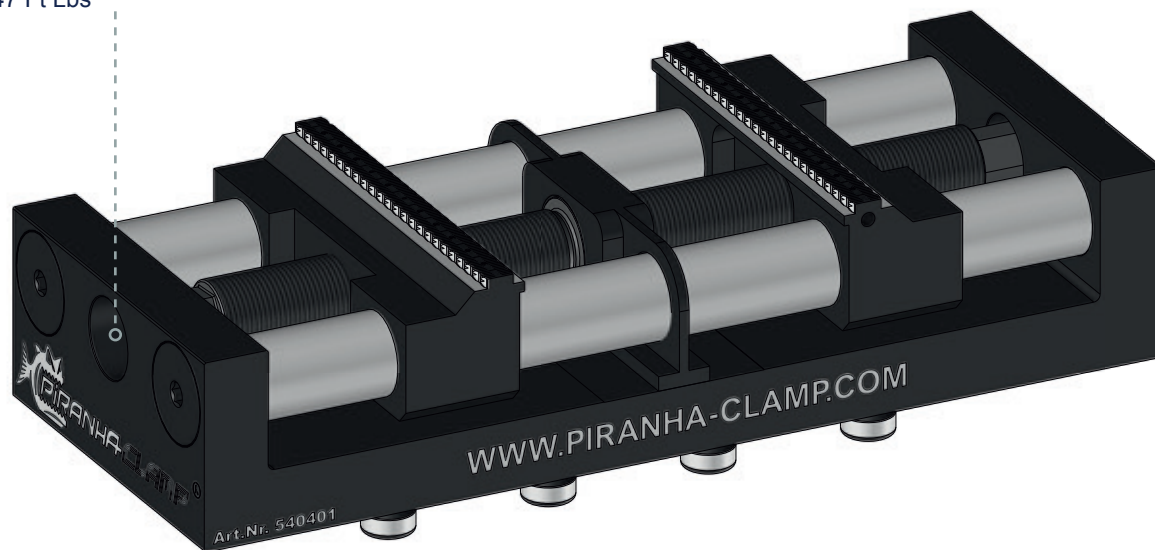
Art. 540447

CV Snapper 300 with higher jaws (+10 mm)

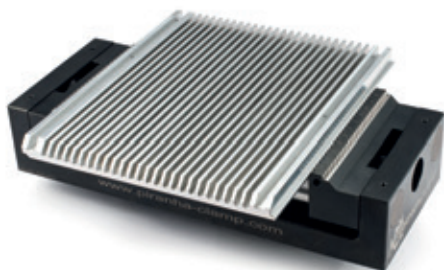
300 x 120 x 76 mm – 11.60 kg



Torquing range for
clamping pressure up to
147 Ft Lbs



For raw part clamping
without pre-clamping



Example: Plates machining with minimum material loss

Double station Snapper 300

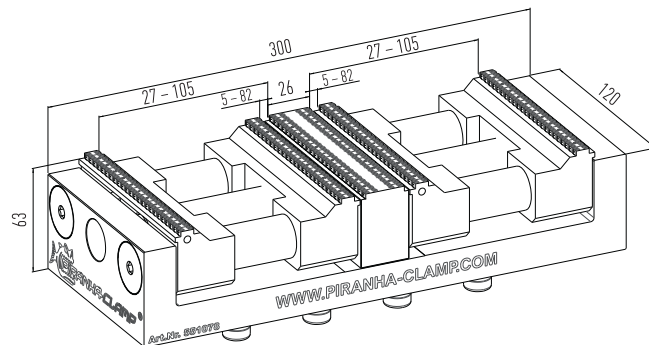
The most biting of its kind for raw part machining of 2 work pieces

Art. 551078

Snapper 300 double station
300 x 120 x 66 mm – 12.00 kg

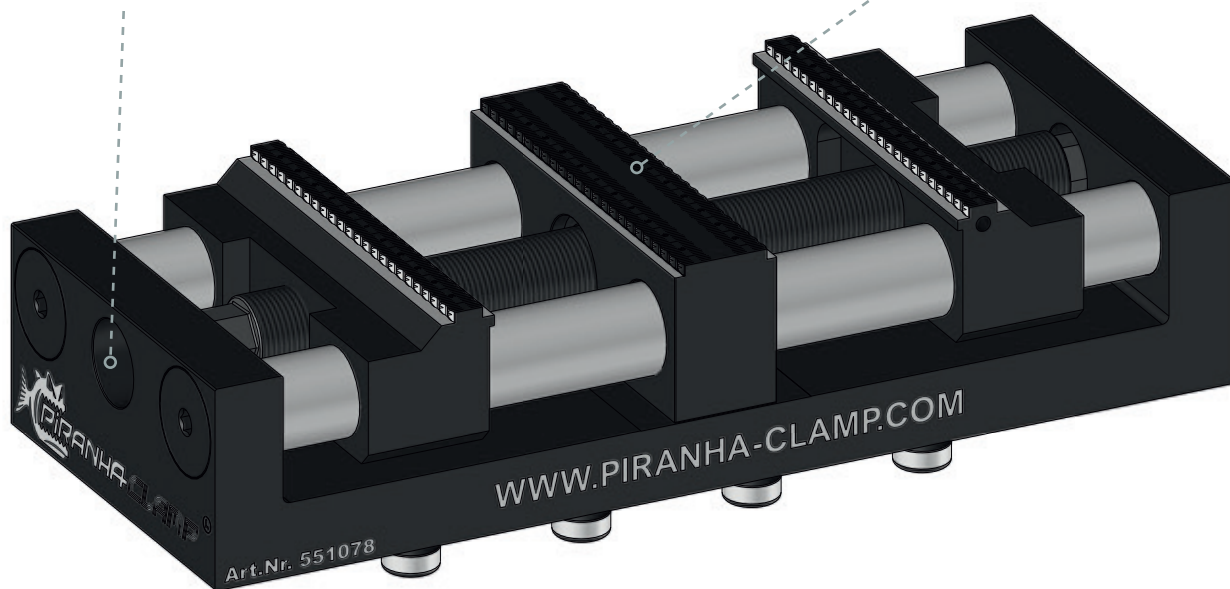
Art. 551077

Snapper 300 double station with higher jaws (+10 mm)
300 x 120 x 76 mm – 12.10 kg



Torquing range for clamping
pressure up to 147 Ft Lbs

Fixed middle jaw



Set-up and working time reduction
by double clamping

High repeatability of 0.01 mm as well
as consistent clamping force for each
clamping process

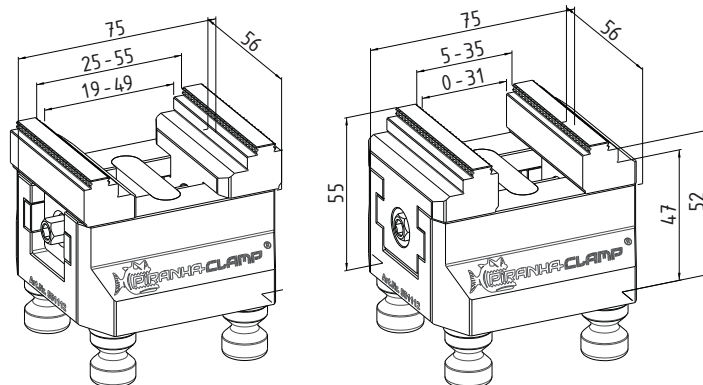
Centering vise PV 75

The small and compact for raw part machining

Art. 551112

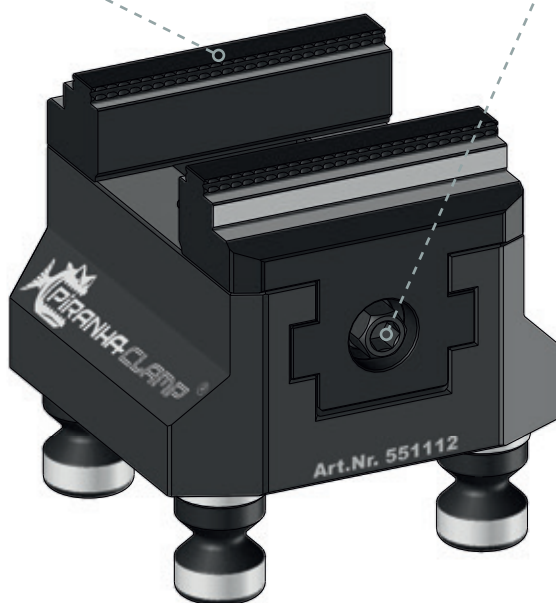
CV PV 75

75 x 75 x 38 mm – 1.60 kg



Customized jaws available on request

Torquing range for
clamping pressure up to
24 Ft Lbs



Good accessibility thanks to
compact design

High repeatability of 0.01 mm as well
as consistent clamping force for each
clamping process

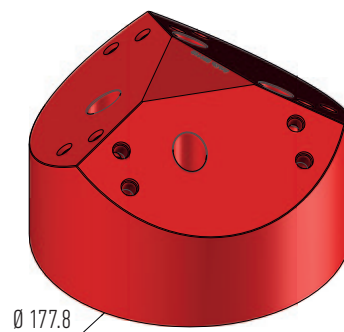
Pyramids

Multiple clamping on 5-axis machines

Art. 551119

Pyramid PV 75

Ø177.8 x 108.6 mm – 5.40 kg

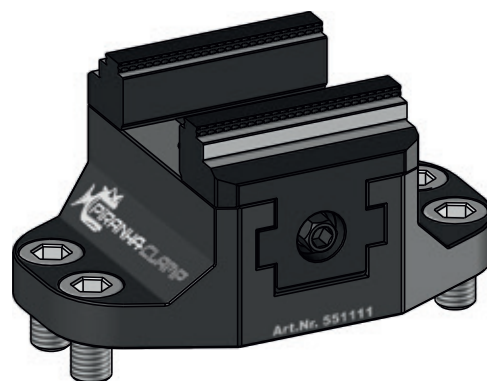


Centering vise to pyramid PV 75

Art. 551111

Centering vise PV 75-P (Pyramid)

38 x 75 x 120 mm – 1.80 kg



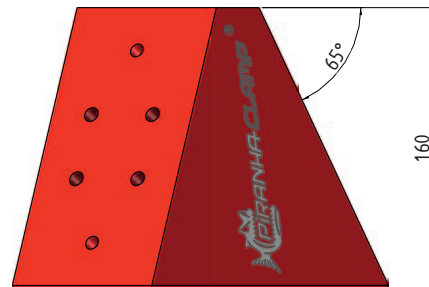
Pyramids

Multiple clamping on 5-axis machines

Art. 551116

Pyramid 25°

250 x 160 mm – 9.70 kg



Vises to pyramid 25°

Art. 540444-PY

CV Gepard 170 incl. clamping jaws aluminium XS 170

Art. 551079-PY

Gepard 170 Double station incl. clamping jaws DS aluminium XS 170

Art. 540362-PY

CV Snapper 170

Art. 540446-PY

V Snapper 170 with higher jaws (+10 mm)

Art. 551076-PY

Snapper 170 double station

Art. 551075-PY

Snapper 170 double station with higher jaws (+10 mm)

Tombstones

For multiple clamping on 4-axis, 5-axis and horizontal machining centres

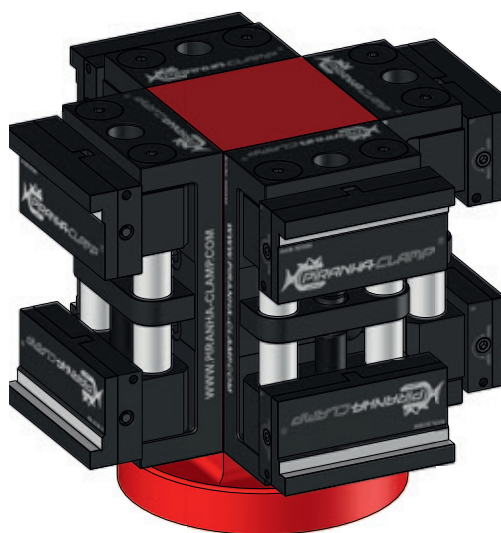


Art. 551141

3-Tower

Adaption for all 170 vises Basis

Ø 120 mm x 210 mm



Art. 551142

4-Tower

Adaption for all 170 vises

Basis Ø 150 mm / 90 x 90 x 210 mm

Zero-point clamping system

For the optimal interface to the machine

Low zero-point clamping system

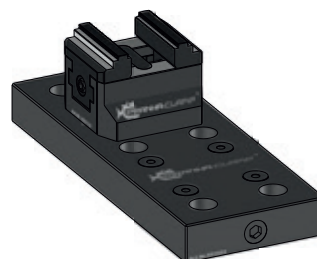
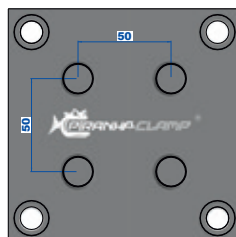
High repeat accuracy thanks to precise bores

Enormous reduction of set-up time

Easy mounting of the bolts in workpiece, fixtures and clamping devices

Uniform force distribution on all 4 bolts thanks to symmetrical mechanics

Clamping screw with end stop (left + right), to avoid overstretching

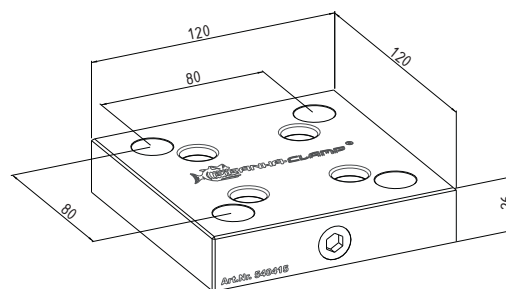


Easy adaptation of various clamping devices and workpieces due to available bolts

Center distance of the zero-point clamping system: 50 mm

If a clamping station remains free, the open positioning holes must be covered with blind plugs.

Zero-point clamping plates grid 40 mm

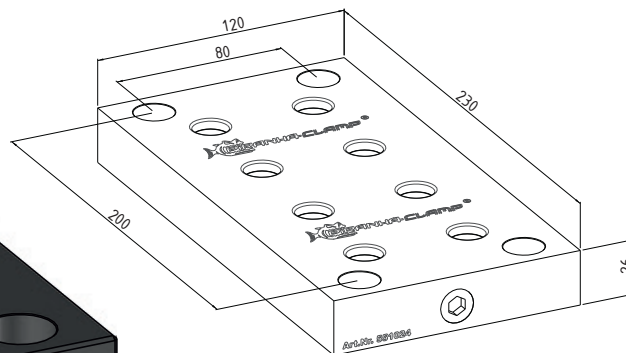


Art. 540415

Zero-point clamping plate grid 40 mm

120 x 120 x 26 mm / 2.40 kg

hole distance 80 x 80 mm



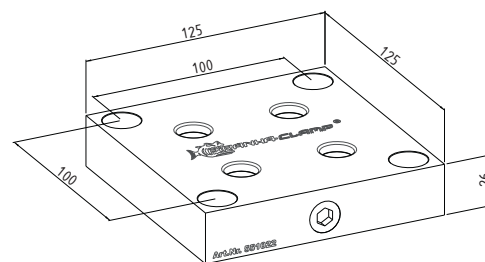
Art. 551024

Double zero-point clamping plate grid

40 mm 230 x 120 x 26 mm / 4.30 kg

hole distance 200 x 80 mm

Zero-point clamping plates grid 50 mm

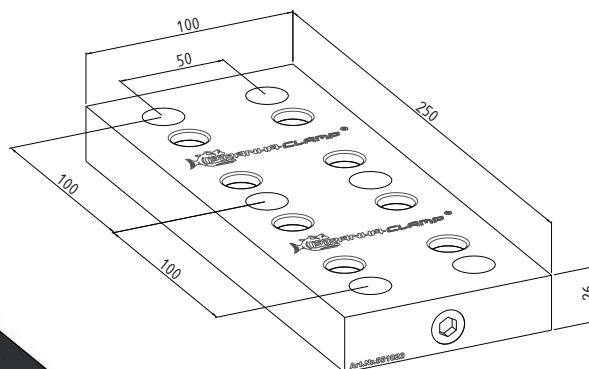


Art. 551022

Zero-point clamping plate grid 50 mm

125 x 125 x 26 mm / 2.65 kg

hole distance 100 x 100 mm



Art. 551023

Double zero-point clamping plate grid 50 mm

250 x 100 x 26 mm / 4.00 kg

hole distance 100 x 100 x 50 mm

Round zero-point clamping plates blank with 1 clamping station



Art. 551086

Zero-point clamping plate blank Ø120 mm x 26 mm

Art. 551087

Zero-point clamping plate blank Ø160 mm x 26 mm

Art. 551088

Zero-point clamping plate blank Ø180 mm x 26 mm

Art. 551089

Zero-Point clamping plate blank Ø200 mm x 26 mm

Art. 501050

Mounting holes on customers request

Art. 501051

Timing holes on customers request

Round zero-point clamping plate blank with 2 clamping stations



Art. 551090

Double Zero-point clamping plate blank Ø280 mm x 26 mm

Art. 501050

Mounting holes on customers request

Art. 501051

Timing holes on customers request

Angular zero-point clamping plate blank



Art. 551093

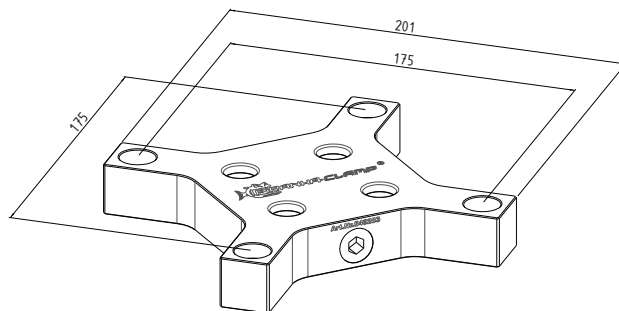
Double zero-point clamping plate blank

250 x 120 x 26 mm / 4.40 kg

hole distance

on customers request

Zero-point clamping plate for round table, pallet and lathe chucks



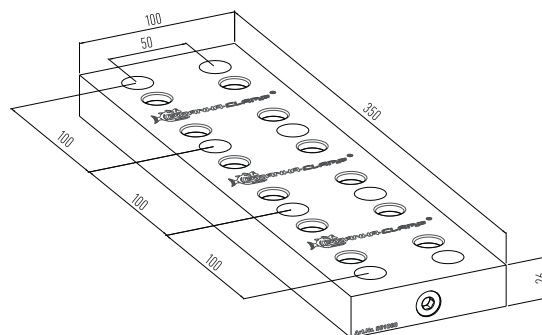
Art. 540283

Zero-point clamping plate Butterfly

170 x 170 x 26 mm / 2.50 kg

hole circle Ø 175 mm

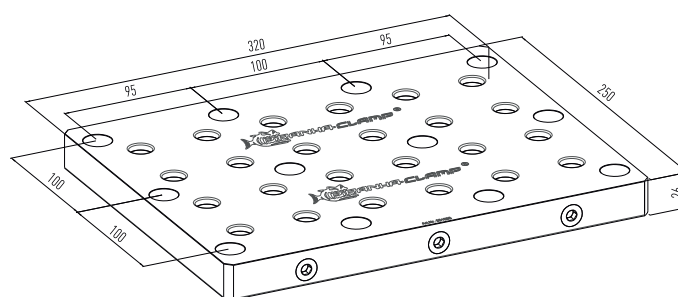
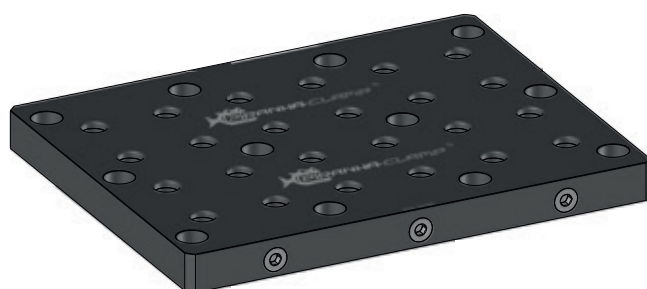
Multi zero-point clamping plates



Art. 551068

Zero-point clamping plate 3-fold

350 x 100 x 26 mm / 5.20 kg



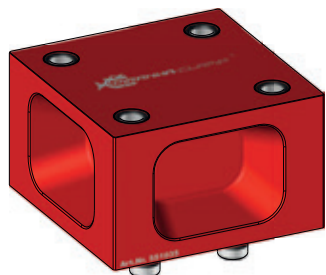
Art. 551085

Zero-point clamping plate 6-fold

350 x 100 x 26 mm / 12.00 kg

Spacer

For the elevated construction



Art. 551035

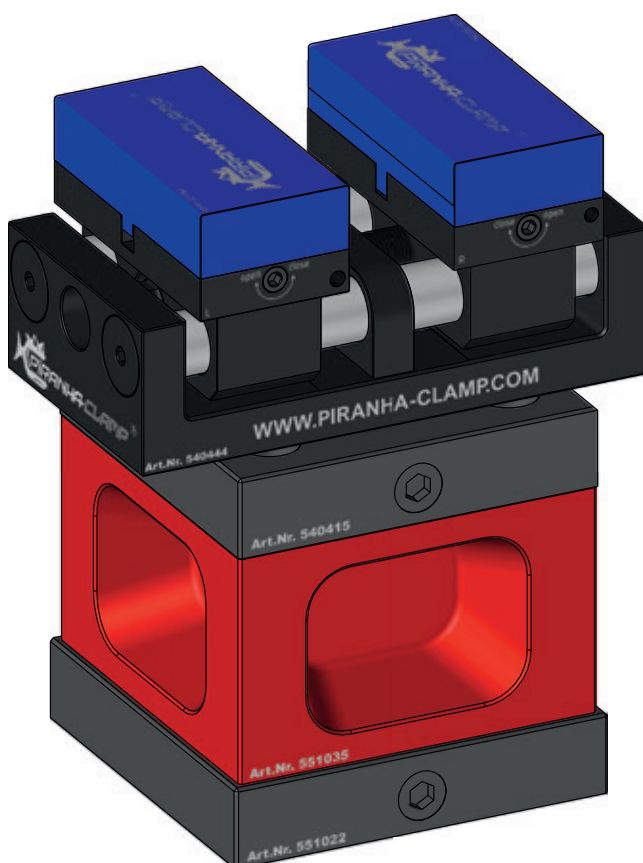
Spacer Alu grid 40 mm
120 x 120 x 74 mm / 2.00 kg



Art. 551037

Spacer steel grid 40 mm
120 x 120 x 74 mm / 5.20 kg

Example: Zero-point clamping plate grid 50 mm, Spacer aluminium grid 40 mm, zero-point clamping plate grid 40 mm, CV Gepard 170

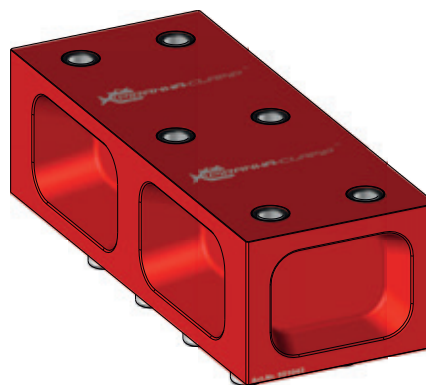


Spacer



Art. 551040

Double spacer Alu grid 40 mm
230 x 120 x 74 mm / 4.10 kg



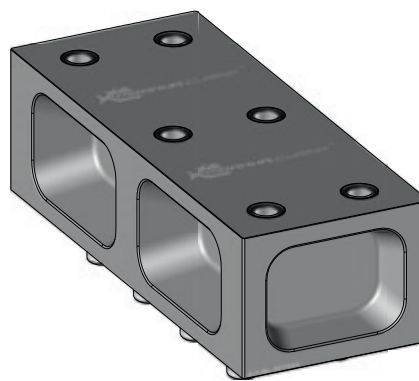
Art. 551043

Double spacer Alu grid 50 mm
250 x 100 x 74 mm / 3.60 kg



Art. 551041

Double spacer steel grid 40 mm
230 x 120 x 74 mm / 10.70 kg



Art. 551044

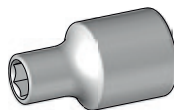
Double spacer steel grid 50 mm
250 x 100 x 74 mm / 9.20 kg

Accessories



Art. 540277

Set bolts for zero-point clamping plate (4 pcs)
15 x 15 x 34 mm / 0.10 kg



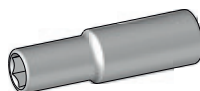
Art. 501000

Socket key 8 mm for vises PV 75
Ø 22 x 40 mm / 0.01 kg



Art. 551025

Set plugs aluminium for zero-point clamping plates (4 pcs)
Ø 18 x 25 mm / 0.05 kg



Art. 501001

Socket key 12 mm for vises 170
Ø 22 x 80 mm / 0.01 kg



Art. 551140

Set blind plugs steel for zero-point clamping plates (4 pcs)
Ø 17 x 22 mm / 0.10 kg



Art. 501002

Socket key 16 mm for vises 300
Ø 22 x 80 mm / 0.01 kg

Customized products

On request we produce:

Clamping jaws

grid plates

Tombstones

Zero-point clamping plates

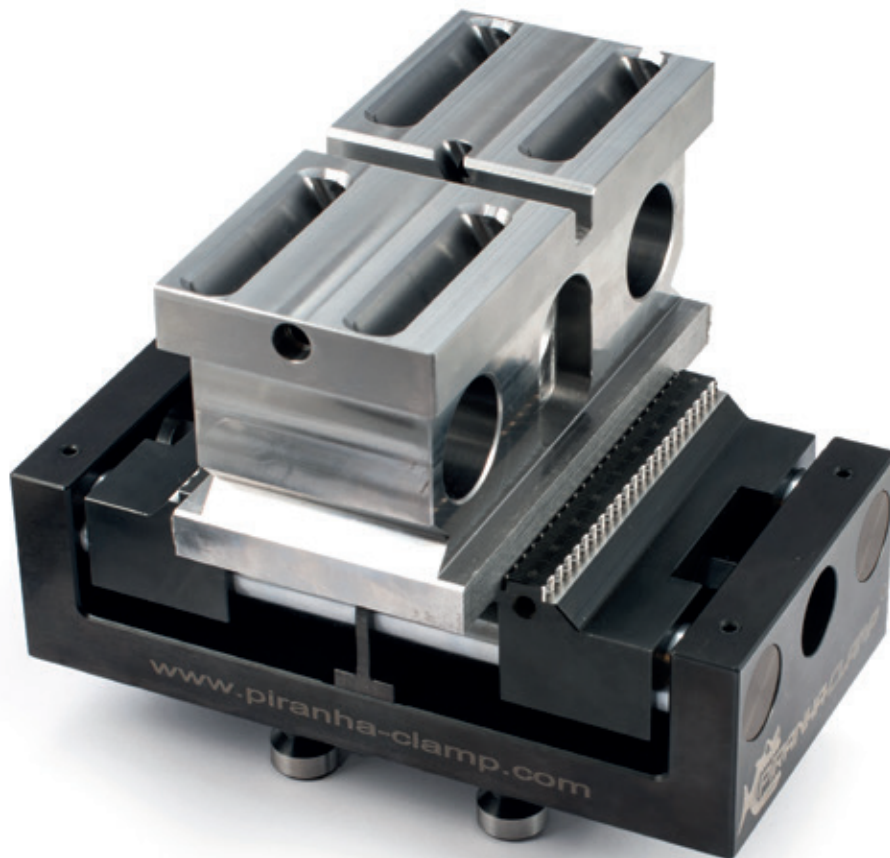
Centering vises

Spacer

Pyramids



info@piranha-clamp.com · www.piranha-clamp.com



All illustrations are for reference only. The datas are subject to change. A copy of the product, whether in whole or in part, and the related technologies is prohibited.
Piranha Cooling Clamp® is a registered name. Technical amendments and errors may occur.



Raptor Workholding Products
100 Quinter Farm Road • Union, Ohio 45322
1-800-824-8333 • RaptorWorkholding.com

Scan to watch
Piranha Clamp
in action!

