

## Workholding Solutions for EDM Applications.

- Have an EDM Application - Use Raptor's Stainless Steel Dovetail Fixtures!
- The stainless steel fixtures and clamps are made from 17-4 stainless steel
- Heat Treat: H-1150 / Rockwell Hardness Approximate 28
- Switch from a standard application to an EDM application in a single step: Simply change the socket head cap screws in the clamping system from alloy steel to stainless steel.

**2.75" Wide Dovetail**



**RWP-403SS-12**

**2.25" Wide Dovetail**



**RWP-006SS**

**1.5" Wide Dovetail**



**RWP-001SS**



**RWP-013SS**



**RWP-036SS**

**0.75" Wide Dovetail**



**RWP-002SS**



**RWP-007SS**



**RWP-011SS**



**RWP-012SS**



**RWP-024SS**

**0.75" Wide Dovetail**



**RWP-030SS**



**RWP-034SS**



**RWP-038SS**



**RWP-405**



**RWP-017SS**

**0.50" Wide Dovetail**



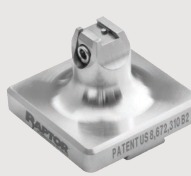
**RWP-018SS**



**RWP-022SS**



**RWP-019SS**



**RWP-031SS**



**RWP-032SS**

**0.375" Wide Dovetail**

**0.281" Wide Dovetail**