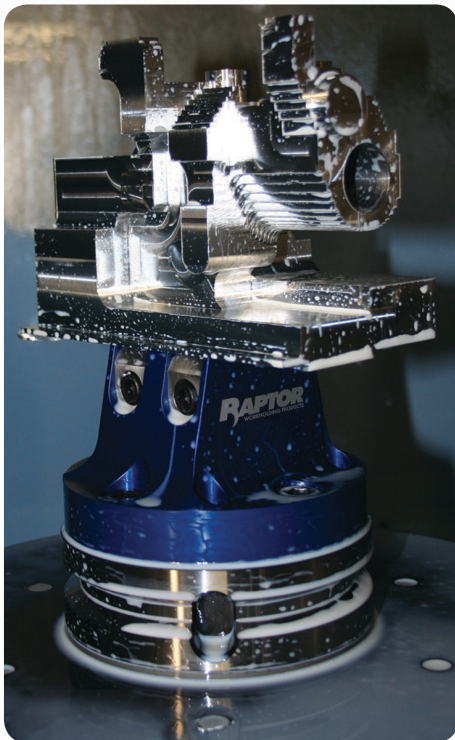


## TOOLING OPTIONS MATSUURA 5 AXIS PRODUCTS



**Matsuura**



MADE IN THE U.S.A



**MAM72-35V**



**MAM72-63V**



**RWP-601 Fixture Extender**

Connects between Fixture and Adapter/Riser

OR



**RWP-602 Fixture Extender**

Connects between Fixture and Adapter/Riser

*Fixtures direct connect to Rotary Tables/Pallets  
and to Raptor Adapters/Extenders*



**RWP-001/RWP-001SS** min workpiece size (LxWxH)  
1.5" Dovetail **2.35" x 2.25" x 0.5"**  
Connect with Adapter max workpiece size  
**6.75" cubed**



**RWP-002/RWP-002SS** min workpiece size (LxWxH)  
0.75" Dovetail **2" x 1.75" x 0.5"**  
Connect with Adapter max workpiece size  
**5.8" cubed/6.375" cubed**



**RWP-006/RWP-006SS** min workpiece size (LxWxH)  
2.25" Dovetail **5.95" x 3.96" x 0.5"**  
Connect with Adapter max workpiece size  
**8x10x18/12x12x12**



**RWP-018/RWP-018SS** min workpiece size (LxWxH)  
0.5" Dovetail **2.5" x 0.95" x 0.5"**  
Connect with Adapter max workpiece size  
**4.75" cubed/5" cubed**



**RWP-207 Riser**

Direct Connect - Inch Pallet



**RWP-001/RWP-001SS** min workpiece size (LxWxH)  
1.5" Dovetail **2.35" x 2.25" x 0.5"**  
Connect with Adapter max workpiece size  
**6.75" cubed**



**RWP-002/RWP-002SS** min workpiece size (LxWxH)  
0.75" Dovetail **2" x 1.75" x 0.5"**  
Connect with Adapter max workpiece size  
**5.8" cubed/6.375" cubed**



**RWP-006/RWP-006SS** min workpiece size (LxWxH)  
2.25" Dovetail **5.95" x 3.96" x 0.5"**  
Connect with Adapter max workpiece size  
**8x10x18/12x12x12**



**RWP-018/RWP-018SS** min workpiece size (LxWxH)  
0.5" Dovetail **2.5" x 0.95" x 0.5"**  
Connect with Adapter max workpiece size  
**4.75" cubed/5" cubed**

**DOVETAIL CUTTER OPTIONS**

Use with all fixtures excluding RWP-006 / RWP-006SS



**RWP-DC403U**  
3-flute, uncoated

for machining softer metals  
such as aluminum or brass



**RWP-DC404C**  
4-flute, coated

for machining harder metals  
such as titanium or stainless steel



### MX-520

300mm / 500mm configurations



#### RWP-234 Riser

Direct Connect 300mm Pallet

OR



#### RWP-237 Nest Riser

Direct Connect 300mm Pallet



#### RWP-223 Universal Adapter

Direct Connect 500mm Pallet



#### RWP-601 Fixture Extender

Connects between Fixture and Adapter/Riser

OR



#### RWP-602 Fixture Extender

Connects between Fixture and Adapter/Riser



#### RWP-001/RWP-001SS

1.5" Dovetail

Connect with Adapter

min workpiece size (LxWxH)  
2.35" x 2.25" x 0.5"  
max workpiece size  
6.75" cubed



#### RWP-002/RWP-002SS

0.75" Dovetail

Connect with Adapter

min workpiece size (LxWxH)  
2" x 1.75" x 0.5"  
max workpiece size  
5.8" cubed/6.375" cubed



#### RWP-006/RWP-006SS

2.25" Dovetail

Connect with Adapter

min workpiece size (LxWxH)  
5.95" x 3.96" x 0.5"  
max workpiece size  
8x10x18/12x12x12



#### RWP-018/RWP-018SS

0.5" Dovetail

Connect with Adapter

min workpiece size (LxWxH)  
2.5" x 0.95" x 0.5"  
max workpiece size  
4.75" cubed/5" cubed



### LX-160



#### RWP-226 Adapter

Direct Connect Inch

OR



#### RWP-227 Adapter

Direct Connect Metric



#### RWP-001/RWP-001SS

1.5" Dovetail

Connect with Adapter

min workpiece size (LxWxH)  
2.35" x 2.25" x 0.5"  
max workpiece size  
6.75" cubed



#### RWP-002/RWP-002SS

0.75" Dovetail

Connect with Adapter

min workpiece size (LxWxH)  
2" x 1.75" x 0.5"  
max workpiece size  
5.8" cubed/6.375" cubed



#### RWP-018/RWP-018SS

0.5" Dovetail

Connect with Adapter

min workpiece size (LxWxH)  
2.5" x 0.95" x 0.5"  
max workpiece size  
4.75" cubed/5" cubed

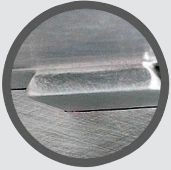
**SEE FOLLOWING PAGE FOR RAPTOR DETAILS**





## RAPTOR IS SIMPLE.

Simply load your workpiece onto the fixture and hand-tighten the spring-loaded clamp. Unloading is just as easy.



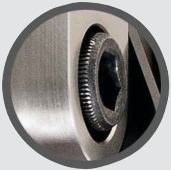
### 1 - SIMPLE DOVETAIL

A simple workpiece prep creates a dovetail that locks into the Raptor spring-loaded clamp.



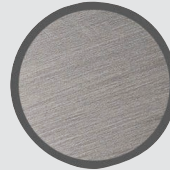
### 2 - SPRING-LOADED CLAMP

Raptor's spring-loaded clamp strongly holds the part and makes releasing easy.



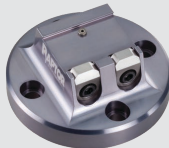
### 3 - HAND TIGHTENED

Use a T-wrench to hand-tighten the clamp and you're done. It's quick, simple and strong.



### 4 - STRONG BY DESIGN

Solid, super-strong stainless-steel or lightweight aluminum ensures that Raptor will hold up to repeated use.



### 5 - FITS ANY MACHINE

We have adapters, risers and versions of Raptor to fit any machine you can think of. Yes, even that one.

- Speed up your manufacturing by machining five full sides of the workpiece in one setup.
- Visit our website for additional product information:  
[www.RaptorWorkholding.com](http://www.RaptorWorkholding.com)

- We are happy to help you find the best workholding solution for your application needs:

818/841-1785  
[info@raptorworkholding.com](mailto:info@raptorworkholding.com)  
[orders@raptorworkholding.com](mailto:orders@raptorworkholding.com)



Patent No. US8,672,310 B2  
Patent No. US9,126,299 B2



MADE IN THE U.S.A